



WE BUILD YOUR DOOR





ALPHA DEUREN OPENS POSSIBILITIES

About Alpha Deuren

Founded in 1995, Alpha Deuren began producing high-quality sectional doors for the industrial and residential markets across Europe. In 2021, the company expanded its product range to include high-speed doors. Today, Alpha Deuren successfully supplies installers and manufacturers of industrial doors in over 30 countries worldwide.

Each door is custom made

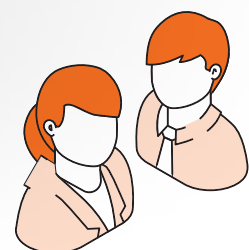
The customer-focused, pragmatic, and solution-oriented approach is key to Alpha Deuren's success. The company specialises exclusively in door manufacturing, which is its core strength. Each door is custom-made, allowing Alpha Deuren to meet specific customer requirements, whether it's for insulation, light entry, speed or frequency of use.

Alpha Deuren stands out through its state-of-the-art production facilities, covering 53,000 m², a comprehensive product range, clear and efficient working methods, competitive pricing

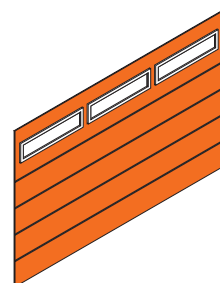
and fast delivery times. This formula continues to drive success, with more than 75,000 doors delivered annually.

Doers with a hands-on mentality

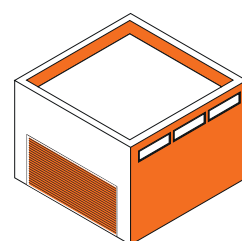
At Alpha Deuren, a hands-on mentality is fundamental to success. The company boasts a dedicated team of real achievers with employees across more than 15 departments, all focused on ensuring high customer satisfaction. Working efficiently and "thinking in possibilities" are central to the company's approach, enabling continuous innovation in production methods and ongoing company growth.



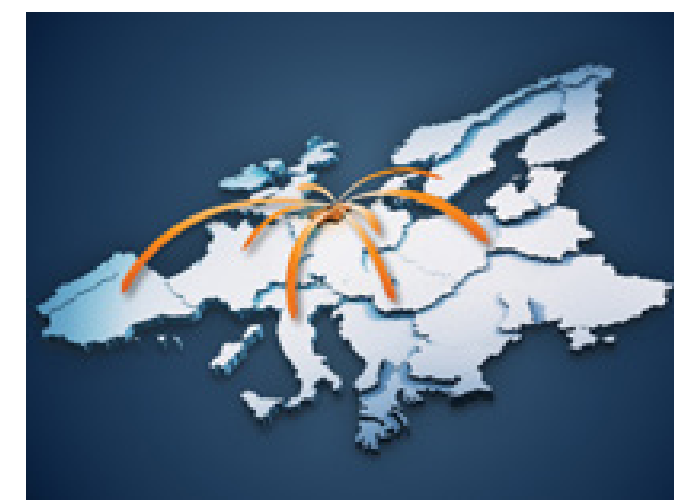
300
employees



75.000
doors per year



53.000 m²
production floor



WE BUILD YOUR DOOR!

14

15

Index

About Alpha Deuren	6
Circular	10
DoorCalculation - Digital showroom	12
TüV	14
Industrial doors	16
ISO doors	18
ALU doors	28
Panorama doors	32
Track systems	38
Insulation package	42
Springless sectional doors	46
Wicket doors	58
Helix	66
Dockdoor Easy Install	70
Garage doors	72
U-values	90

Index

ALL-IN-ONE LOCATION: ULTRA-MODERN PRODUCTION

Alpha Deuren manufactures in-house, adhering to the strictest European laws, regulations and standards. This commitment ensures that every Alpha door meets the highest industry requirements. Additionally, we have established strategic partnerships with leading manufacturers, enabling us to offer a comprehensive range of industrial and garage doors under one reliable roof. We source parts and components from globally preferred suppliers, ensuring that Alpha Deuren delivers quality that stands out in the industry.

From production to delivery

The manufacturing process at Alpha Deuren takes place in state-of-the-art production halls, where door panels and track systems are produced and assembled automatically, according to custom specifications. The required spring packages are also assembled in-house, ensuring precision and quality. To ensure the highest standards, the components are manufactured using specialised tools at select suppliers, carefully chosen for their expertise. All components of the construction kit are efficiently gathered at a pre-programmed location within the warehouse, ensuring a streamlined assembly process. What sets us apart as a premium door supplier is our ability to produce insulation panels in-house within our group. Additionally, we have our own dedicated motor factory, further enhancing the quality and customisation of our products.

Smarter and better

At Alpha Deuren, we strive to be trendsetters by consistently investing in our people, materials, and resources. However, we also understand that when purchasing industrial doors, the primary focus often remains on price. Balancing innovation with cost-effectiveness is essential, which is why we work to offer high-quality solutions that meet both industry standards and budget requirements. However, for us, this is not an excuse to compromise on quality. That's why we dedicate ourselves to continuously improving our production methods. By focusing on smarter and more efficient techniques, we ensure that we can continue delivering high-quality, precision-engineered products at very competitive prices.



Complete and everything
under one roof.

WE BUILD YOUR DOOR!



FLAWLESS LOGISTICS

SERVICE-ORIENTED AND
COST-EFFECTIVE

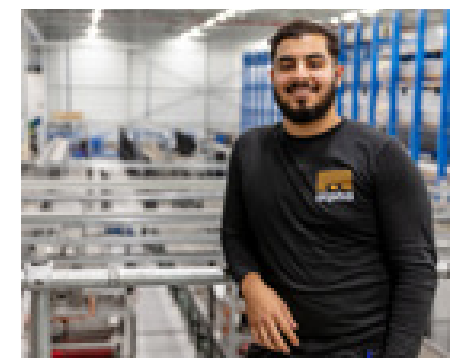
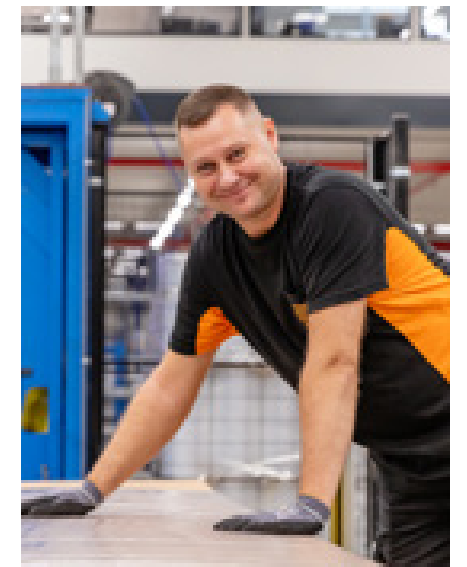
Flawless logistics

What sets our approach apart in the industry is our ability to deliver just-in-time to your specified location when your order includes both high-speed doors, sectional doors and rollers shutters (external manufacturer). This ensures that

you benefit from a single delivery and unloading event for different products, streamlining the process and enhancing efficiency. Everything is carefully coordinated to guarantee flawless logistics!!



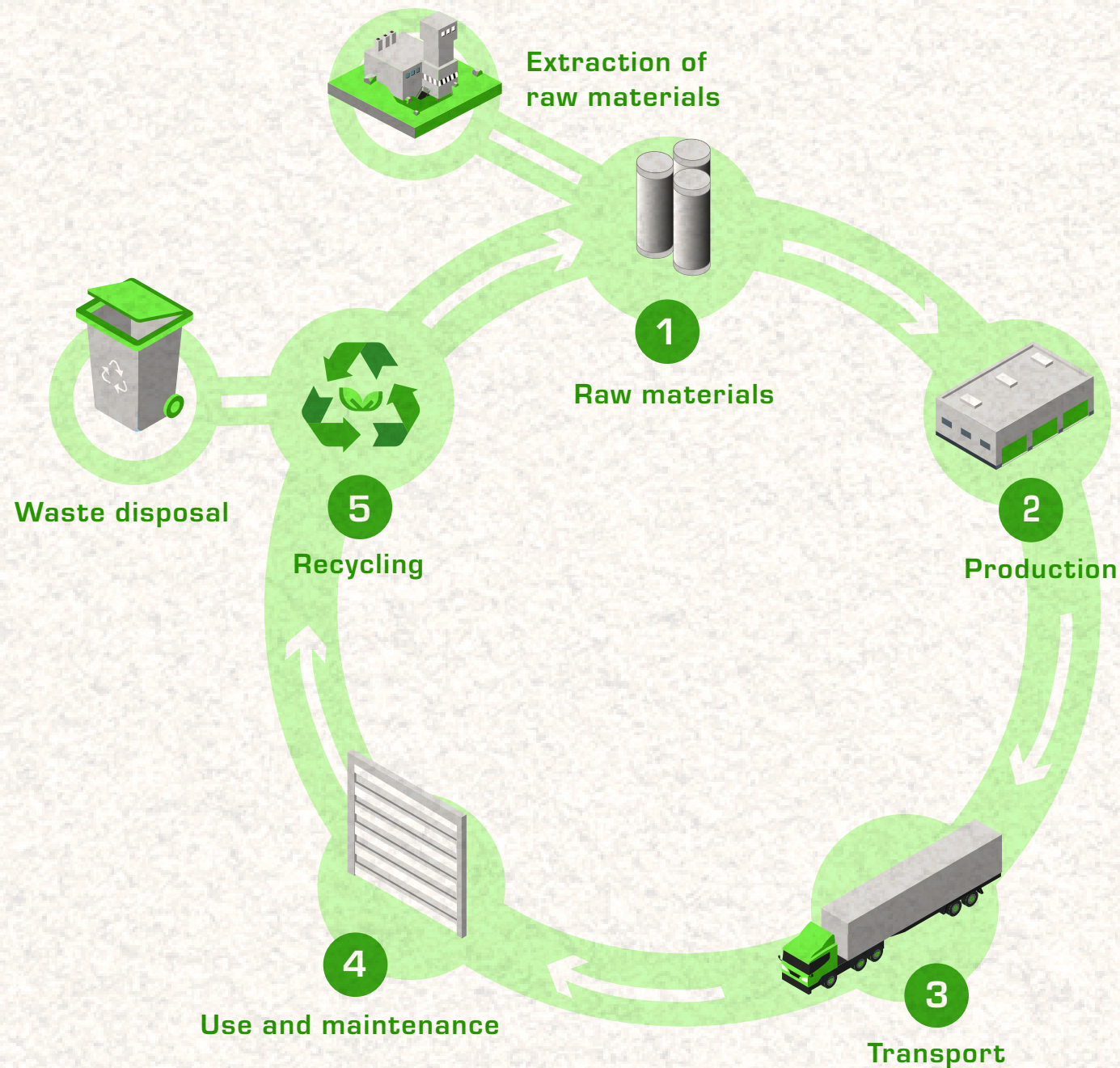
Ready for shipping



WE BUILD YOUR DOOR!

CIRCULAR

AN INTEGRAL PART OF
OUR OPERATIONAL APPROACH



1. Raw materials

- As much as possible European suppliers
- No suppliers from sanctioned countries

2. Production

- Minimum cutting waste
- Efficient packaging
- Transition to paperless production through digitalisation

3. Transport

- Central logistics hub
- Electric company cars
- 66% more capacity per truck
- Packaging for long distance
- Testing use of electric trucks for deliveries

4. Use and maintenance

- Maintenance-friendly products such as springless systems

5. Recycling

- Returning pallets
- Recyclable materials such as Polystyrene, steel & foam

Alpha's sustainable business practices

- Solid and safe packaging
- Environmental Product Declaration (EPD's)
- Home office policy
- Sustainability policy group-wide
- Annual environmental compliance audit

SUSTAINABILITY FOR
NOW AND TOMORROW

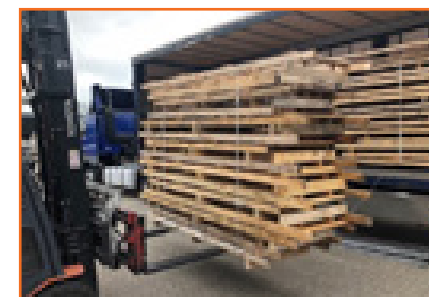
As a leading manufacturer of industrial sectional doors, we are committed to contributing to a more sustainable future. Therefore, we are introducing our customers a new, sustainable service through which we contribute to the environment together. This service involves the return of pallets after the doors are delivered, promoting reuse and reducing environmental impact. The first tests have been successfully completed, so we would like to inform you about the possibilities.

Would you like to participate in this sustainable initiative?
This is how you prepare pallets for shipment:

Collect & Stack!

Collect undamaged pallets on which the doors were delivered. For an agreed number of pallets, we will pick up the collection at one central location.

Stack the pallets in equal lengths and no higher than 2.5 metres. The images below show an example.



DOORCALCULATION

CONFIGURE YOUR OWN ALPHA DOOR

Fastest Configurator on the Market!
The price, delivery date, and technical specifications are shown within minutes!

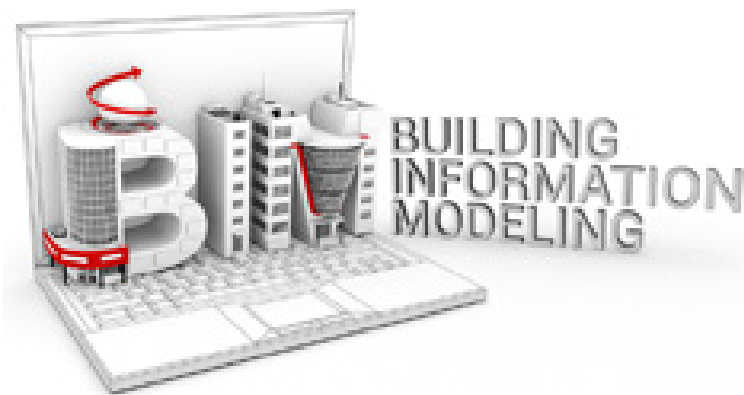


DoorCalculation

With the Alpha DoorCalculation program, Alpha dealers gain access to a highly user-friendly and comprehensive tool for project preparation and calculation. This program supports all product categories, including ISO and ALU sectional and panoramic doors (40, 60, and 80 mm), roller and high-speed doors and garage doors. The output generated includes detailed quotations and project descriptions, customised with the dealer's branding, ready to be sent directly to the client.

Another testament to the professional service at Alpha Deuren: since customer-specific conditions are seamlessly integrated into the system, the price for each custom configuration is instantly visible! This streamlined process ensures transparency and efficiency, offering clients an immediate overview of costs tailored to their exact specifications.

BIM PROJECTS:



BIM drawings of doors are becoming increasingly important for projects. While larger contractors were the primary users of BIM in the past, smaller contractors are now adopting the system as well. With the Alpha DoorCalculation program, you can easily generate the requested BIM drawings yourself. This allows you to assist contractors in preventing potential problems on-site by providing 3D files that ensure smoother construction processes.

DIGITAL SHOWROOM

LET'S GET DIGITAL

You can now explore our range of industrial doors from the comfort of your own home or office. The interactive experience of the digital showroom allows you to browse through our diverse selection of sectional and high-speed doors. This way, you can gather more information to make an informed decision or provide detailed advice when it comes to purchasing an industrial door.

The digital showroom is available in six languages and is compatible with both desktop and mobile devices. It features 3D animations of the doors, videos showcasing our latest products and an extensive gallery of reference photos. All relevant commercial and visual documentation is readily accessible. Experience the convenience and full range of possibilities that the digital showroom offers—explore it for yourself now.



TRY NOW!

Or check our showroom.alpha-deuren.nl/en



WE BUILD YOUR DOOR!

BAUMÜSTER TÜV

THE STANDARD IN SECTIONAL DOORS

INTENSIVELY TESTED AND MONITORED

Compared to many other suppliers, Alpha Deuren is "Baumuster geprüft". We set ourselves apart by our dedication to upholding the highest quality standards in every product we deliver.



Certified Safety

Alpha Deuren products undergo rigorous endurance and durability testing, where test models are subjected to 33,000 opening and closing movements before being evaluated by experts. This relentless commitment to quality and safety ensures that our sectional doors fully comply with the EN13241 standard and hold complete TÜV Nord approval.

Physical properties

During extensive testing, Alpha sectional doors are examined for a wide range of mechanical and electrical properties by TÜV Nord, a respected German certification body. These tests result in specific classifications for each physical property, enabling easier comparison of products from various manufacturers, and showcasing Alpha's commitment to delivering top-tier products.

ASSESSMENT CRITERIA

Alpha sectional doors are rated for, among other things:



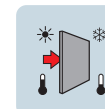
Resistance and wind load



Sound absorption



Waterproofness



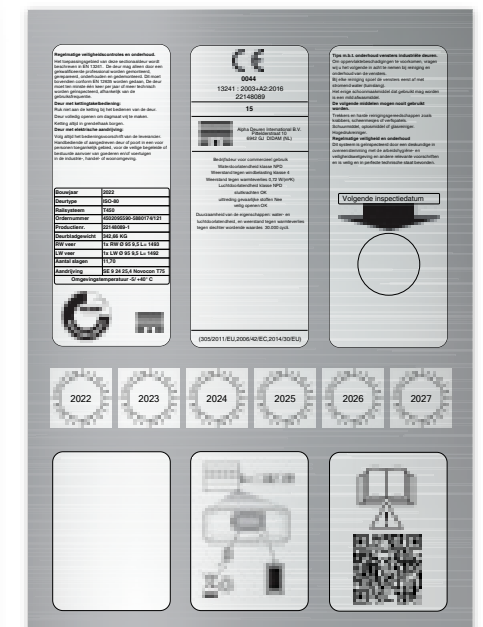
Thermal insulation



Air permeability



User Safety



WE BUILD YOUR DOOR!



Industrial doors

ISO 40 MM

THE ALPHA

ALL ROUNDER

The ISO 40 mm sectional door is Alpha's best-selling model, offering superior heat insulation and sound absorption with its sleek, micro-profiled panels. The design options are virtually limitless, allowing each door to be tailored precisely to its intended application. Customers can select from a wide range of window types, sizes, and 19 standard colours in Alpha's collection.

Built for Versatility

Developed with state-of-the-art techniques, the ISO 40 mm sectional door is crafted for durability and precision. Notable features include metal or aluminum end caps, robust reinforcement profiles, and an anodized aluminum base profile seamlessly integrated from view. This design flexibility makes the ISO 40 mm sectional door a true all-rounder, blending performance, affordability and adaptability across diverse applications.

ISO 40 XXL

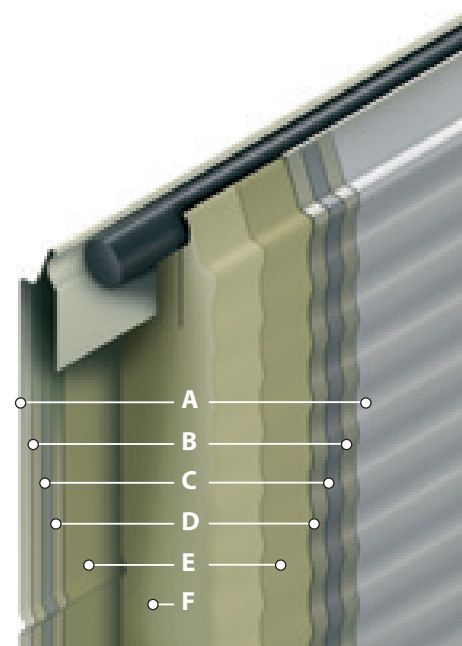
Extra large available till
10.000 mm x 6.000 mm (bxh)

UNIQUE
IN THE
MARKET

"Sandwich"-construction ISO 40 panel

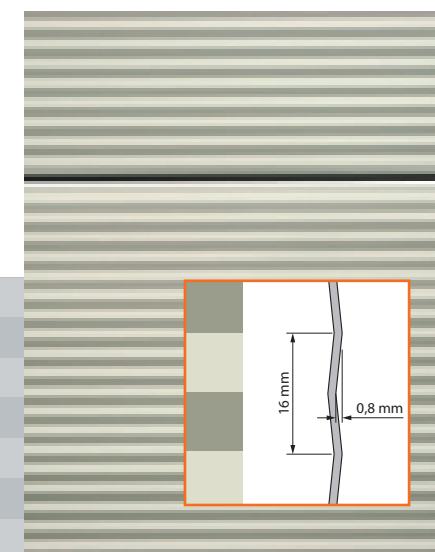
Panel thickness: 40 mm
Insulation value: $U=0,52 \text{ W/m}^2\text{K}$
Specific density PU Foam: 40 kg/m^3

A	Paint layer:	19 standard colours (outside)
B	Zinc coating:	275 g/m ²
C	Steel sheet:	0,5 mm
D	Zinc coating:	275 g/m ²
E	Primer coating:	
F	PU high density foam:	$g=40 \text{ kg/m}^3$, Free of CFK and H-CFK
E	Primer coating:	
D	Zinc coating:	275 g/m ²
C	Steel sheet:	0,5 mm
B	Zinc coating:	275 g/m ²
A	Paint layer:	RAL 9002 (inside)



Largest number of standard colours in the market!

Microprofiling, our standard finish, is available in 19 standard colours at no additional cost.



U-VALUE ISO 40mm 5000X5000 MM:

- sectional door: $0.91 \text{ W/m}^2\text{K}$
- sectional door with insulation ++package: $0.80 \text{ W/m}^2\text{K}$



ISO 60 MM

ENHANCED INSULATION AT A COMPETITIVE PRICE

The ISO 60 mm sectional door provides superior insulation and sealing, ideal for areas where climate separation is essential. This model helps maintain stable temperatures in production halls or storage spaces, offering robust weather resistance along with excellent sound-absorbing and heat-insulating properties. Its micro-profiled sheet steel panels are designed to withstand various environmental challenges.

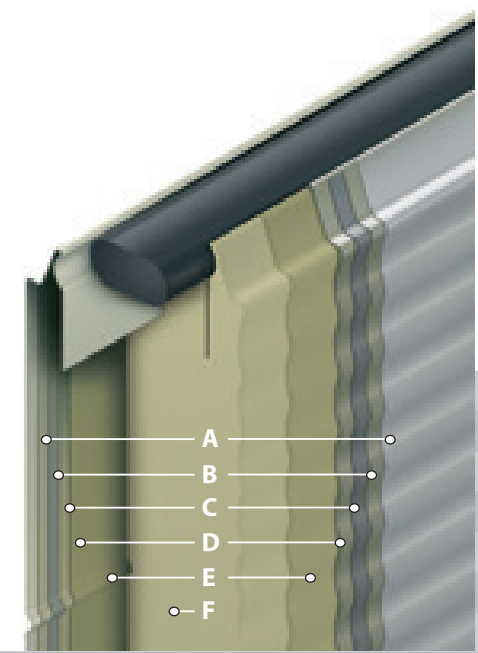
High-Performance Insulation Value
The panels of the ISO 60 are constructed using a „sandwich“ method, where CFC-free polyurethane foam is sandwiched between two galvanized steel plates. This structure not only boosts insulation but also enhances durability. Available in 14 standard RAL colours, the door can also be customized with a wet-paint acrylic coating in any RAL colour to meet specific design needs.



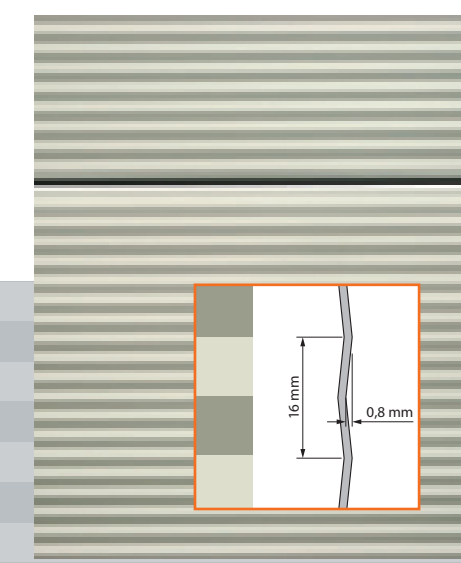
“Sandwich”-construction ISO 60 panel

Panel thickness: 60 mm
Insulation value: $U=0,35 \text{ W/m}^2\text{K}$
Specific density PU Foam: 40 kg/m^3

A	Paint layer:	14 standard colours (outside)
B	Zinc coating:	275 g/m ²
C	Steel sheet:	0,5 mm
D	Zinc coating:	275 g/m ²
E	Primer coating:	
F	PU high density foam:	$g=40 \text{ kg/m}^3$, Free of CFK and H-CFK
E	Primer coating:	
D	Zinc coating:	275 g/m ²
C	Steel sheet:	0,5 mm
B	Zinc coating:	275 g/m ²
A	Paint layer:	RAL 9002 (inside)



Microprofiling, the standard, in 14 standard colours at no extra charge.



U-VALUE ISO 60mm 5000X5000 MM:
• sectional door: 0.78 W/M2K
• sectional door with insulation ++package: 0.71 W/m²K



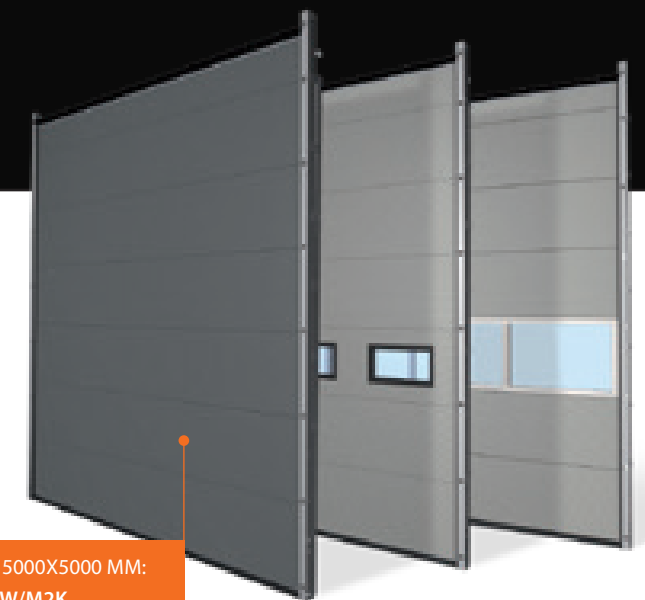
ISO 80 MM

MAXIMUM INSULATION
WHEN ENERGY SAVINGS
ARE AN ABSOLUTE MUST

As energy efficiency standards for industrial and commercial buildings continue to tighten, the need for high-performance access doors becomes more critical. The ISO 80 sectional door is the next step in insulation, following the success of the ISO 40 and ISO 60 models. It utilizes a polyurethane foam core, with a thermal break between the interior and exterior of the panels, ensuring enhanced thermal insulation.

Optimal Insulation for Energy Savings

With a U-value of 0.25 W/m²K, the ISO 80 sectional door is ideal for environments where maintaining a stable temperature is essential, such as cold storage facilities, industrial halls, and logistics centres. The door's exceptional insulation properties help prevent heat loss, making it a perfect choice for situations where temperature control is critical for both ecological and economic reasons. This door complies with current energy-saving regulations, providing customers with an effective solution to meet modern energy efficiency standards.

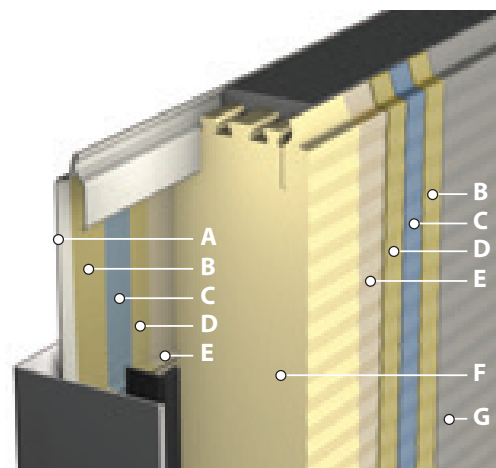


U-VALUE ISO 80mm 5000X5000 MM:
• sectional door: 0.46 W/M2K

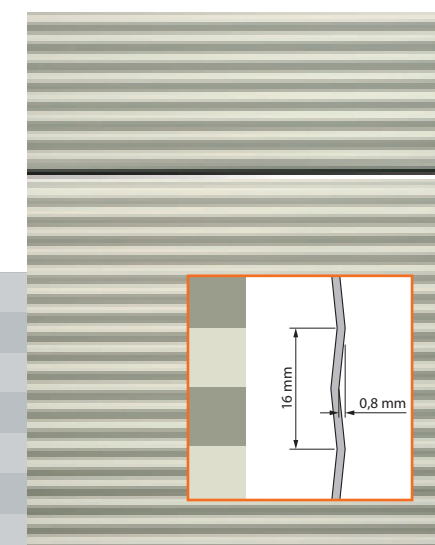
"Sandwich"-construction ISO 80 panel

Panel thickness	80 mm
Insulation value:	U=0,25 W/m ² K
Specific density PU Foam:	40 kg/m ³
Panels	Exterior microline profiled Inside stucco design

A	Paint layer:	RAL 7016, 9002 en 9006 (outside)
B	Zinc coating:	275 g/m ²
C	Steel sheet:	0,5 mm
D	Zinc coating:	275 g/m ²
E	Primer coating:	
F	PU high density foam:	g=40 kg/m ³ , Free of CFK and H-CFK
G	Paint layer:	RAL 9002 (inside)



Microprofiling, the standard, in 3 standard colours at no extra charge.

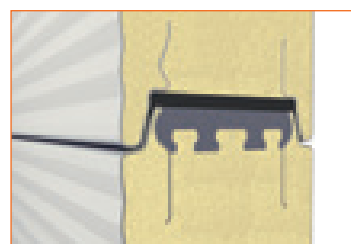
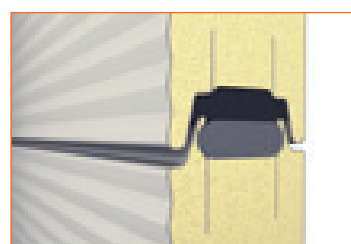
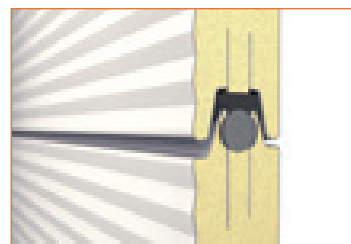


Floor sealing

For optimal bottom sealing, Alpha Deuren employs a double bottom rubber seal with inward-curved edges. This design, combined with a special PVC profile, reduces thermal transfer for better insulation and energy efficiency.

PARTICULARS

ISO 40 | 60 | 80



Connection panels

The connection joint between the panels of ISO 40, ISO 60, and ISO 80 doors is both wind- and watertight, thanks to a foam rubber cord placed between the panels. This design ensures that the inner plate of the door remains separated from the outer plate, which contributes to optimal insulation.



ISO 40/60

Standard Frame

The connection between the door leaf and the vertical tracks in a standard corner frame ensures a strong, tight seal between the side of the door and the building. This design prevents gaps and enhances the overall durability and insulation of the door system.



ISO 40/60/80

Heavy-duty Frame ZHK

This frame is used for doors with dark colours to prevent the door from warping due to sun exposure. When heated by the sun, the door can bow outward, potentially impacting the upper lintel. The heavy corner frame effectively prevents this from happening, maintaining the door's structural integrity.

ISO 40

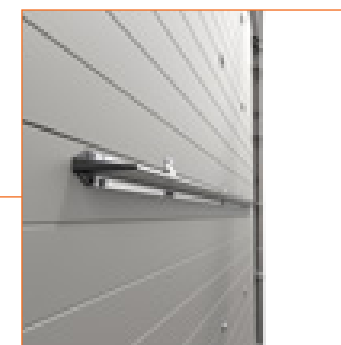


ISO 40/60/80



External Lock for Every Situation:

Depending on the panel thickness, the type of cylinder, and the desired locking position, an external lock can be customised to meet these specific requirements and preferences.



ISO 40/60/80

Wind load

Depending on the door's width, Alpha Deuren has reinforced it with specialised profiles. These reinforcement profiles ensure that the door meets all relevant regulations and standards regarding resistance to heavy wind loads.

ISO 60/80

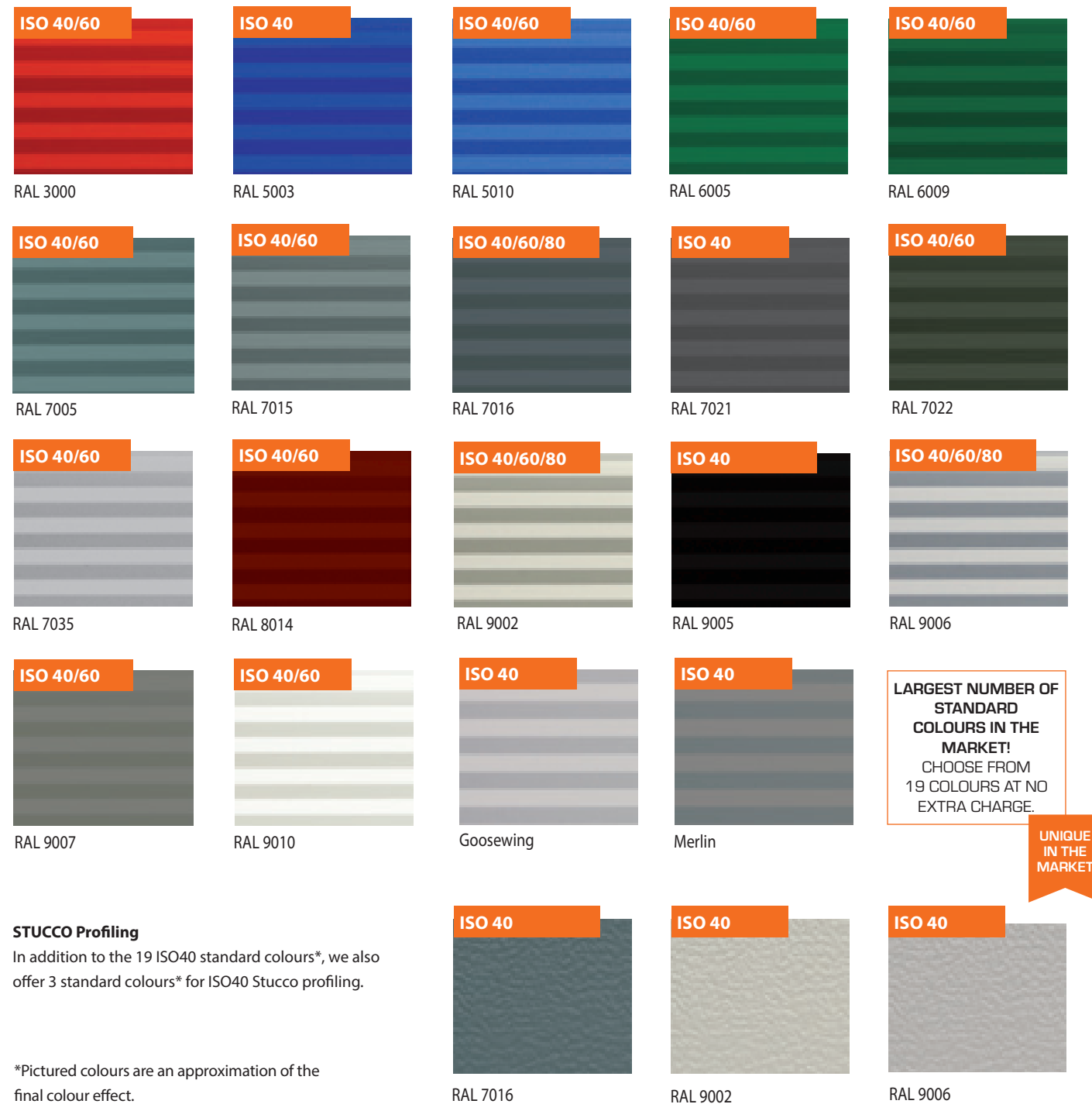


Floor Sealing

For optimal bottom sealing, Alpha Deuren employs a double bottom rubber seal with inward-curved edges. This design, combined with a special PVC profile, reduces thermal transfer for better insulation and energy efficiency.

Standard colours

At Alpha Deuren, architects have the freedom to explore design and colour options, enhancing the aesthetic of modern industrial architecture. The micro-profiled sheet steel used for our doors offers a versatile canvas, and with 19 standard colours* available, each door can be customised to fit perfectly within any design concept. Best of all, there are no additional costs for these colours. Thanks to the durable and colourfast coil coatings, Alpha Deuren doors can be seamlessly integrated into your company's branding or corporate identity. If you have specific colour requirements, Alpha Deuren also offers a selection of custom colours. However, it is recommended to avoid dark colours on sectional doors exposed to prolonged sunlight, as this can lead to bending of the panels.

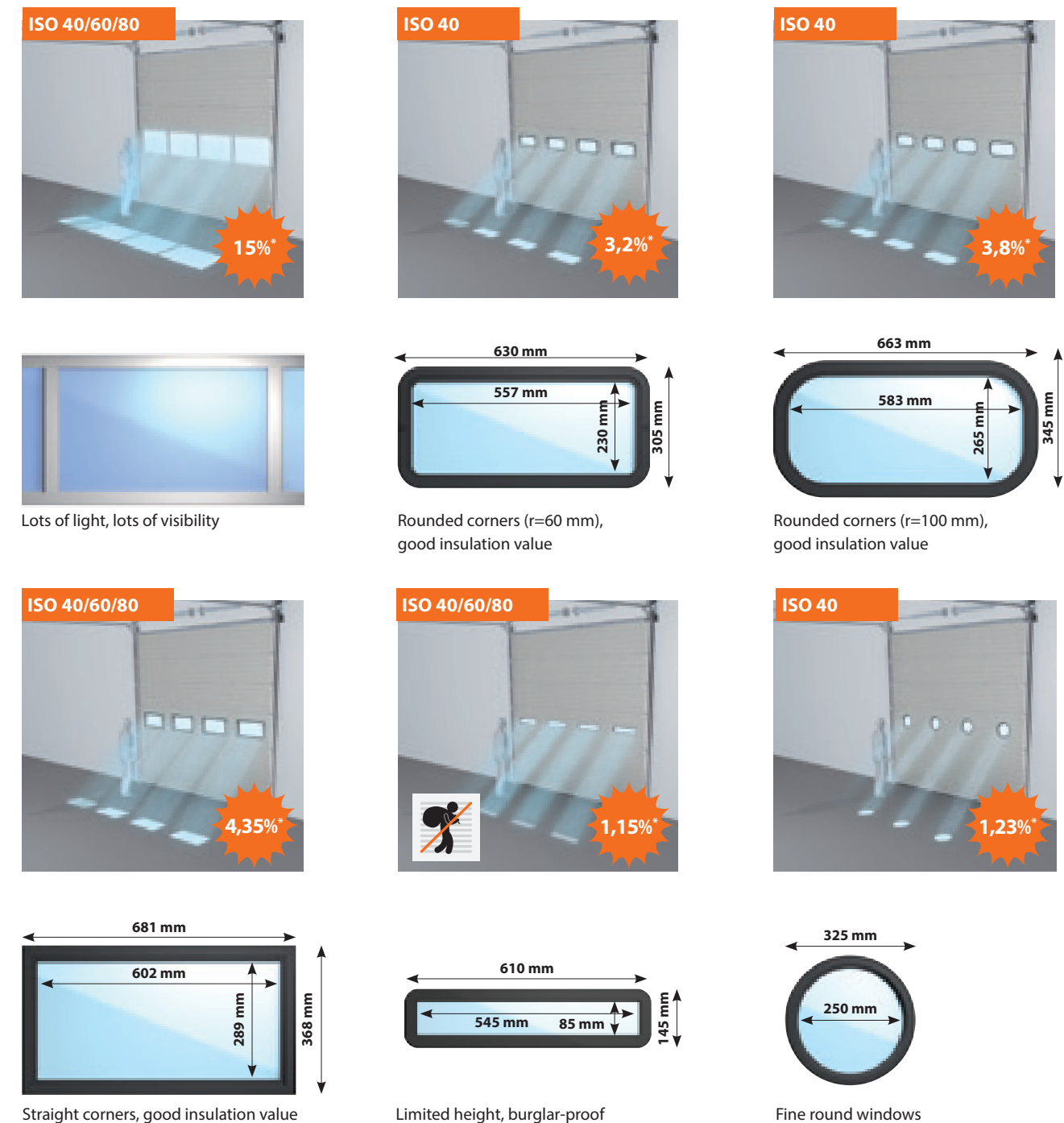


* Dark colours should be avoided for double-walled steel doors facing the sun, as possible slat deflection can damage the door. All colours are based on the respective RAL colour. The illustrations of colours and surfaces are not binding for technical printing reasons.

WINDOW VERSIONS

The function of windows

ISO sectional doors can be fitted with plexiglass windows, ensuring excellent light entry and visibility. The standard window options feature elongated shapes with straight or rounded corners, available in single or insulating double glazing. For added security, we offer reduced height rectangular windows with rounded corners, designed for burglary resistance. For a unique design touch, choose round windows or creative patterns.



* Percentages depend on door size and total number of windows.

ALU 40 MM

WHEN LIGHT AND VISIBILITY MATTER

In industrial settings where light and visibility are key, the Alpha Deuren ALU 40 mm sectional door excels. The door leaf is crafted from multiple sections, utilizing specially designed aluminium profiles that allow for a wide range of field fillings. This enables the integration of windows, aluminium cassette panels, and various types of glazing, including translucent, coloured, insulating, or air-permeable options. The versatility of the ALU 40 mm door allows nearly endless possibilities.

Customising with Windows

The ALU 40 mm sectional doors can be equipped with a variety of plastic windows in different qualities, insulation values, colours, and patterns. Choose from coloured glass, perforated plates, or play with surface divisions to achieve the perfect design. For optimal results, combine ISO panels with the ALU sections to create a unique visual impact. Whether you need to maximize light for workspaces or enhance the overall aesthetics, the ALU 40 door offers endless customization opportunities, combining functionality with design flexibility.

Clima Profiles for ALU 40 mm Sectional Doors

Clima industrial doors play a key role in maintaining the separation of different temperature zones. In response to this need, Alpha Deuren has developed specialised ALU Clima profiles for its 40 mm sectional doors, in addition to the 60 and 80 mm versions. These doors feature a continuous window rubber, ensuring optimal performance and sealing.

The thermal door also incorporates PVC glass strips with a seal, while the seals between the sections have been specifically designed for high performance and thermal efficiency. Focused on improving insulation, Alpha Deuren has developed thermal fillings to further enhance the door's energy-saving capabilities, making it an ideal choice for environments requiring precise temperature control.

U-VALUE ISO 40mm 5000X5000 MM:

- sectional door: 3.70 W/M2K
- sectional door with insulation ++package: 3.12 W/m²K

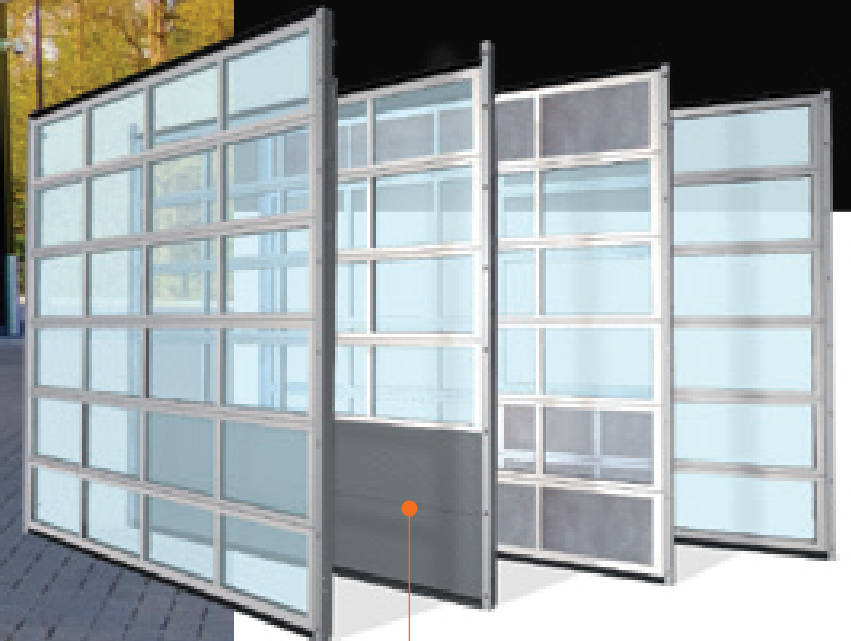
ALU 60 MM

ENHANCED INSULATION AT AN AFFORDABLE PRICE

The ALU 60 mm sectional door is a modern innovation, offering exceptional performance in terms of form, function, and ease of installation. Standard features include triple glazing, ensuring outstanding heat insulation, anti-condensation, and soundproofing properties. This makes it ideal for spaces where light, visibility, and temperature consistency are crucial.

Special Insulation Profiles

The ALU 60 door is 1.5 times thicker than the ALU 40 door, built with two aluminum profiles separated by thermal insulation profiles. This design results in an exceptionally low U-value, even with the inclusion of glazing. The ALU 60 mm sectional door is particularly suitable for industrial environments where both light ingress and energy efficiency are essential.



U-VALUE ISO 60mm 5000X5000 MM:

- sectional door: 2.39 W/M2K
- sectional door with insulation ++package: 2.34 W/m²K

PANORAMA DOOR 40-60 MM

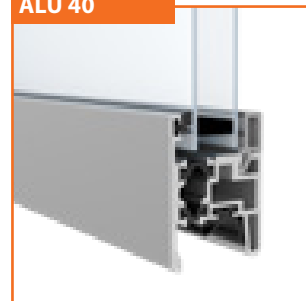
OPTIMAL VIEW -
NO VERTICAL PROFILES

The Panorama door is an ALU door available in both 40 mm and 60 mm variants, designed to offer an uninterrupted view with no vertical dividers between panels. This unique design allows for expansive glass surfaces, making it ideal for showcasing products or providing excellent visibility in workshops. The high-quality, extra-thick plexiglass used is almost indistinguishable from real glass, offering both durability and optical clarity, with minimal distortion.

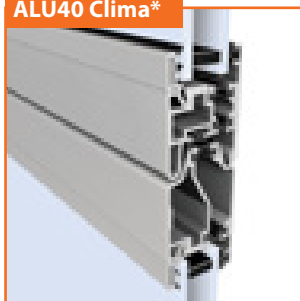
Areas of application

Thanks to their exceptional transparency, Panorama doors allow abundant natural light to flood interior spaces, making them an ideal choice for showrooms, workshops and other environments where both light and aesthetic appeal are important. These doors create a bright and welcoming atmosphere, enhancing the visual appeal of the building while providing functional benefits.

ALU 40



ALU40 Clima*



ALU 60



Plexiglas Optical

The Panorama door is available in widths of up to 4000 mm and heights of up to 4500 mm. Especially in environments where an appealing appearance of the building is important, as well as light and visibility in the hall, the Panorama door comes into its own perfectly. What is special about the high-quality "Plexiglas Optical" applied is that it has the looks of real glazing combined with the safety of plastic. The Plexiglas Optical windows are available in 20 mm double glazing and in 40 mm triple glazing.

Optimal Scratch Resistance

Ensures long-lasting clarity

ALU 40/60



Panorama door 40 mm

- Double Plexiglass
- Optical 20mm (4-12-4 mm)

Panorama door 40 mm Clima

- Double Plexiglass
- Optical 20 mm (4-12-4 mm)
- *Thermally separated

Panorama door 60 mm

- Triple Plexiglass
- Optical 40 mm (4-14.75-2.5-14.75-4 mm)

U-value Panorama door 40mm 4000x4000 mm:

- sectional door: 4.18 W/m²K
- sectional door with insulation ++ package: 4.04 W/m²K

U-value Panorama door 40mm Clima 4000x4000 mm:

- sectional door: 3.16 W/m²K
- sectional door with insulation ++ package: 3.04 W/m²K

U-value Panorama door 60 mm 4000x4000 mm:

- sectional door: 2.47 W/m²K
- sectional door with insulation ++ package: 2.40 W/m²K

U-VALUE Panorama 60 mm 4000x4000 mm
sectional door Clima 2.39 W/m²K,
with triple glazing

PARTICULARS

ALU 40 | 60

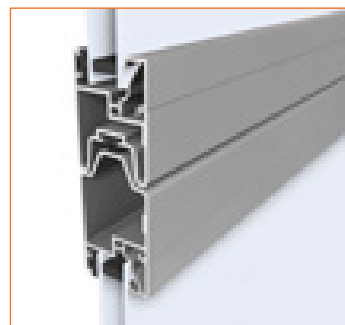
ALU 40



Connection Sections

The connection between the panels of an ALU 40 door is wind- and waterproof, ensured by EPDM sealing rubber.

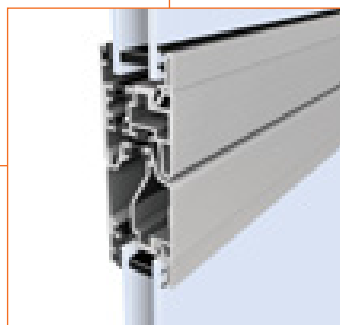
ALU 40



Aluminum Glazing Beads

These glazing beads provide a neat connection and maintain a high-quality appearance, even with large temperature fluctuations.

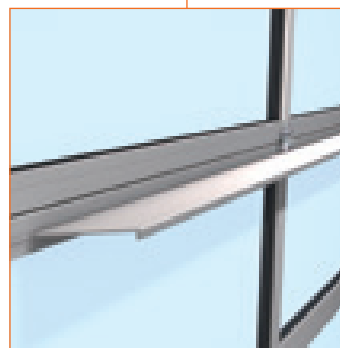
ALU 40 Clima



Thematically separated

The thermal door is equipped with plastic glass slats fitted with a seal. The seals between the sections are also optimally designed for high performance values.

ALU 40/60



Wind Load

For stability against heavy wind loads, the ALU door features integrated reinforcement profiles, varying in thickness or height depending on the door configuration. For doors over 4200 mm (ALU 40) or 5000 mm (ALU 60), every second panel is reinforced. For doors over 5000 mm (ALU 40) or 5800 mm (ALU 60), every section is reinforced.

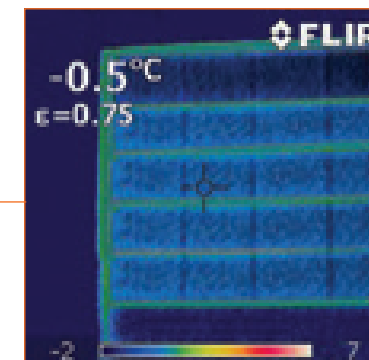
ALU 60



Condensation

On standard ALU 40 doors, condensation may form under cold conditions and high humidity. If you wish to prevent condensation, the ALU 60 door, with special insulation profiles, is the ideal solution, as it prevents moisture buildup even in high-humidity environments.

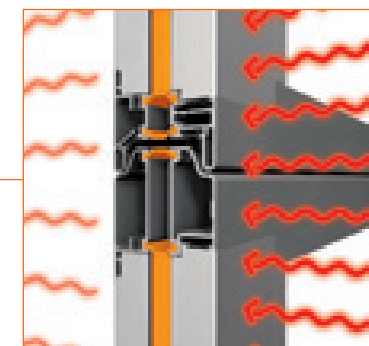
ALU 60



Infrared recording

The ALU 60 offers superior insulation, minimizing energy loss. The light areas in the image indicate where some energy is lost, while the darker areas represent well-insulated sections. This ensures optimal insulation performance, even in challenging conditions.

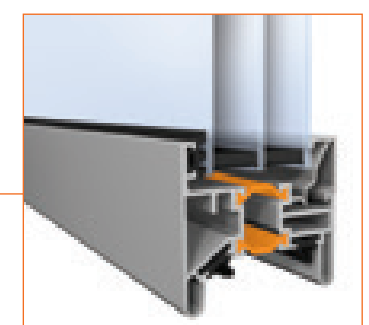
ALU 60



Connection sections

The connection between the sections of an ALU 60 door is wind and watertight. Heat transmission is stopped by the special insulation profiles.

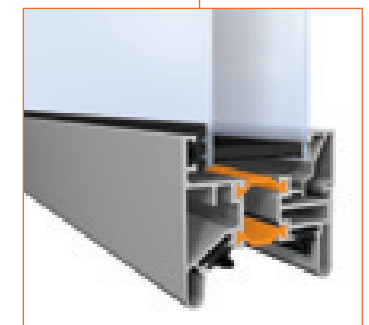
ALU 60



Triple glazing

The ALU 60 door comes standard with triple windows for extra good insulation value. The windows are placed in thermally decoupled insulation profiles.

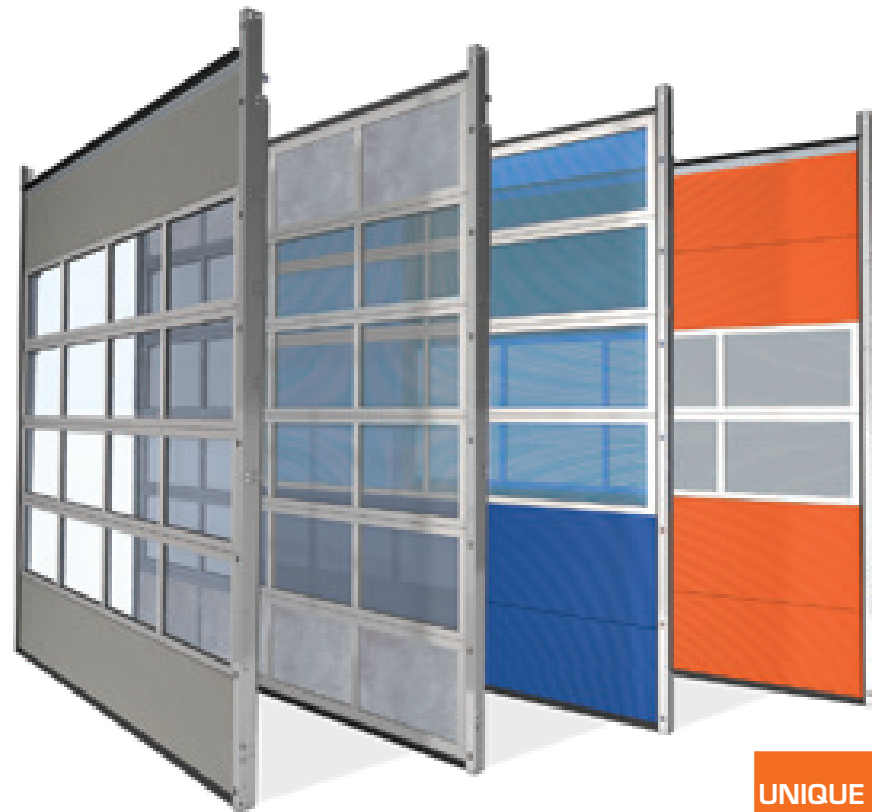
ALU 60



Double plastic glazing is available. However, this option has lower insulation value.

ALU WINDOW TYPES

ALU 40 | 60



Different fillings

Alpha Deuren offers limitless options for glazing in ALU doors, allowing architects to fully customise the design. The windows come in a wide range of qualities, colours, transparency levels and styles, offering a fixed selection for various aesthetic and functional needs. Choose from materials such as single-walled acrylic, 4 mm tempered glass, double-walled acrylic, structured glass, single-walled perforated options with air vents, or impact-resistant plastics. The possibilities for customisation are virtually endless!

UNIQUE IN THE MARKET



Combine with colour

The ALU door comes standard in clear anodized aluminium but can be customised with a wide range of colour options. The aluminium can be coated in any colour of your choice using wet lacquer, and when combined with Rodeca glazing or ISO panels in one of 10 colours from the Alpha house collection, it offers endless design possibilities.

TRANSPARENT

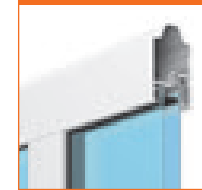
ALU 40



Double-glazed filling transparent

(20 mm) in: Acrylic, Polycarbonate, Structured glass, 4 mm tempered glass (light transmission 100%) Aluminium glazing beads

ALU40 / Clima



Double-glazed filling transparent with thermally separated

(20 mm) in: Acrylic, Polycarbonate, Structured glass, 4 mm tempered glass (light transmission 100%) Plastic glazing beads

ALU 60



Double-glazed transparent filling

(40 mm) in: Acrylic, Polycarbonate, Plexiglas (light transmission 100%)

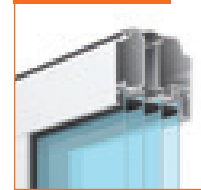
ALU 60



Triple glazing transparent filling

(40 mm) in: Plexiglas (light transmission 100%)

ALU 80



Four glazing transparent filling

(60 mm) in: Plexiglas (light transmission 100%)

COLOURED

Coloured outside, transparent inside

ALU 40 / Clima



Double-glazed filling coloured smoke

(20 mm) in: Acrylic, Polycarbonate, (light transmission 14.5%)

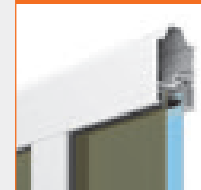
ALU 40 / Clima



Double-glazed filling coloured anthracite

(20 mm) in: Acrylic, Polycarbonate, (light transmission 53%)

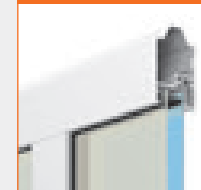
ALU 40 / Clima



Double-glazed filling coloured brown

(20 mm) in: Acrylic, Polycarbonate, (light transmission 52%)

ALU 40 / Clima



Double-glazed filling coloured milk white

(20 mm) in: Acrylic, Polycarbonate, (light transmission 20%)

ALU 60



Triple glazing coloured smoke

(40 mm) in: Acrylic, Polycarbonate, (light transmission 14.5%)

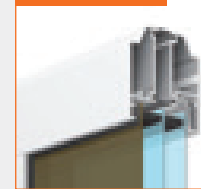
ALU 60



Triple glazing coloured anthracite

(40 mm) in: Acrylic, Polycarbonate, (light transmission 53%)

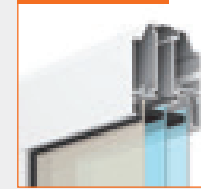
ALU 60



Triple glazing coloured brown

(40 mm) in: Acrylic, Polycarbonate, (light transmission 52%)

ALU 60



Triple glazing coloured milk white

(40 mm) in: Acrylic, Polycarbonate, (light transmission 20%)

POLYCARBONATE

ALU 40



5-core Polycarbonate hollow-core plate

(20 mm) transparent (light transmission 63%)

ALU 40



(20 mm) opal tinted (light transmission 42%)

PERFORATED

ALU 40



Single-walled perforated ALU sheet

(2 mm) round perforation (air permeability 40%)

ALU 40



(2 mm) square perforation (air permeability 70%)

FILLED

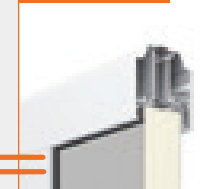
ALU 40 / Clima



Double-walled closed sandwich filling

(20 mm), outside with smooth plate and inside with stucco design

ALU 60



Double-walled closed sandwich filling

(40 mm), outside with smooth plate and inside with stucco design

ALU 40 / Clima



Double-walled closed sandwich filling

(20 mm), inside and outside with stucco design.

ALU 60



Double-walled closed sandwich filling

(40 mm), inside and outside with stucco design.

PERFORATED

ALU 40



Single-walled perforated ALU sheet

(2 mm) round perforation (air permeability 40%)

ALU 40



Single-walled perforated ALU sheet

(2 mm) square perforation (air permeability 70%)

TRACK SYSTEMS

HIGH QUALITY MODULAR ASSEMBLY

Alpha Deuren's track systems are designed to be modular and, where possible, pre-assembled for ease of installation. These systems are versatile, suitable for ISO, ALU, and Panorama doors. The focus on certified quality and durability ensures that both the track systems and spring packages meet high standards, providing reliable performance over time.

Spring buffer

The spring buffer, mounted robustly, provides an initial push for the door to lower from its horizontal position. Depending on the door configuration, either a door stop or a spring buffer of varying lengths will be supplied to ensure smooth operation. This feature helps manage the door's movement and contributes to its durability.

UNIQUE
IN THE
MARKET



Floor plate

The floor plate ensures proper alignment of the track with the floor, functioning in conjunction with the distance profile to maintain the correct spacing between the tracks.



M8 bolt connections

The standard connections between the sheet metal parts and track profiles are made with M8 bolt connections. This approach, combined with the carefully pre-assembled components, allows for faster installation times.



Cable position

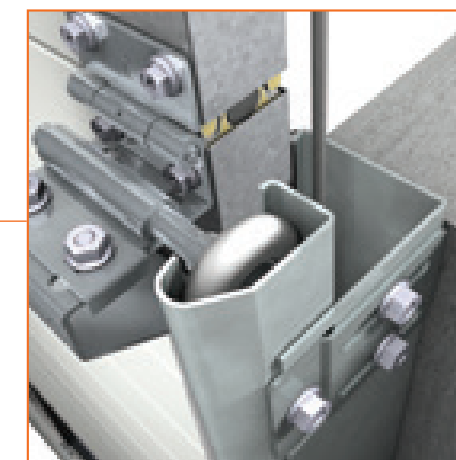
The modular structure of our track systems and sheet metal components allows us to always ensure an ideal cable position in relation to the vertical tracks. This ensures optimum safety and operational reliability.



NEW
NEW
NEW

We offer track systems and additional components made of stainless steel in European AISI304 quality.

- Track systems T450, T400, T500 in stainless steel
- Fixing sets in stainless steel
- Track hangers in stainless steel
- Bearing plates in stainless steel



Safety track

A safety running track ensures that the wheels cannot run out of the track. For extra safety, the cable is safely encapsulated in the construction.

PARTICULARS TRACK SYSTEMS



ALU 40

Top seal

The top panel of the ALU 40 door is fitted with a sealing rubber that provides additional insulation and an optimal connection to the top lintel. As a result, the door does not gape, preventing energy loss.



ALU 60

Top seal

The top panel of the ALU 60 door is equipped with double EPDM sealing rubbers, which enhance insulation and ensure a tight seal with the top lintel. This design prevents the door from remaining ajar, effectively minimizing energy loss and optimizing thermal efficiency.



ALU 40/60

Single side hinge

Alpha Deuren applies single side hinges to doors up to a opening width of about 5 metres. It is a robust construction that ensures the door runs smoothly and seals well.



ALU 40/60

Double side hinge

Alpha Deuren applies double side hinges on doors from a opening width of about 5 metres. This ensures that even heavier doors run beautifully.



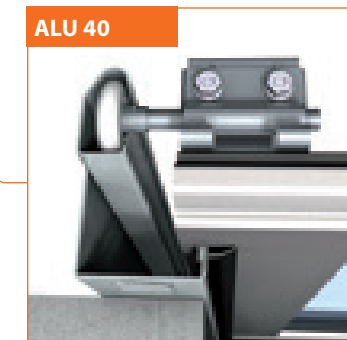
ALU 40



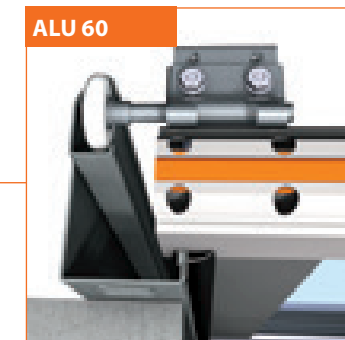
ALU 60

Floor sealing

To ensure a solid connection between the door and the floor, Alpha Deuren uses a sealing rubber. Combined with a bracket and a water barrier cast into the concrete by the contractor, this system effectively prevents water ingress. The sealing rubber is consistent across models: one is used for the ALU 40, while two are used for the ALU 60, depending on door thickness.



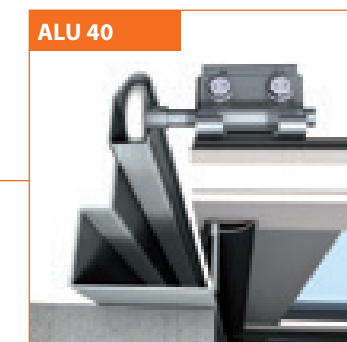
ALU 40



ALU 60

Standard corner frame

The connection of the door leaf to the vertical tracks on a standard corner frame ensures a firm and good seal between the side of the door and the property.



ALU 40



ALU 60

Heavy corner frame

We apply this frame to doors with a dark colour. Due to heating of the sun, the door expands and can hit the upper lintel in the middle. The heavy corner frame prevents this.



Insulation ++ package

Extra insulation is possible with the Insulation ++ package. A PVC profile fitted with a Foam band behind the steel frame ensures thermal separation between wall and track system.

**NEW
NEW
NEW**

INSULATION ++ PACKAGE ENERGY SAVING!!

With the combination of ALU40 Clima panels and the Insulation ++ package, the U-value is improved by **up to 25%***. This results in significant energy and therefore cost savings.

What does Alpha's Insulation ++ package consist of?

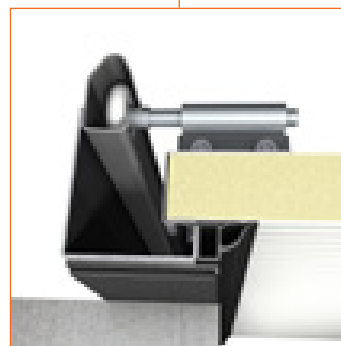
- Top seal with double lip and plastic top profile
- High-performance side seal
- PVC profile behind the frame

* For an industry door 40 mm 5000x5000 mm and depending on configuration.



Double-lipped top seal

Resulting in optimum U-value and effective sealing.



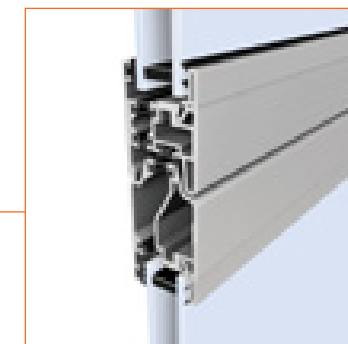
High-performance side seal

With an additional insulating space.



Plastics profile behind frame

PVC wall partition equipped with compriband between frame and wall are separate parts for easy and efficient maintenance.



Thermally separated ALU Clima

Industrial doors with ALU Clima profiles are crucial for keeping different temperature zones separated. Therefore, Alpha Deuren has now developed special thermally separated ALU profiles for 40mm sectional doors, in addition to the 60mm and 80mm sectional doors!

The door is equipped with a continuous window seal, resulting in optimal performance. The ALU40 Clima panels are equipped with PVC glazing beads, including a seal on the window. The seals between the sections are developed for optimal performance values.

Benefits of ALU40 Clima profiles:

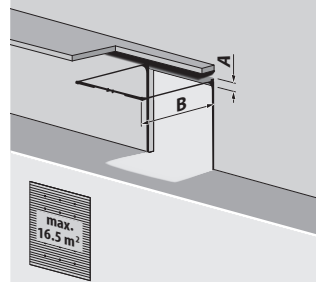
- Enhanced U-values
- New ALU section concept for a sleeker design
- Improved water resistance and air tightness: both class 3!

TRACK SYSTEMS

Alpha Deuren's track systems are designed to adapt to various installation requirements, ensuring that doors can be mounted securely in different building types. With varying available space and construction constraints, Alpha offers a range of track variants that can be customized to fit any situation.

A solution
for every
variant

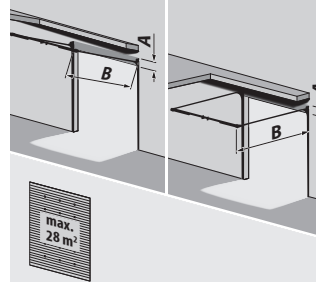
T 200



Low-profile track system, internal cables + steel support profile

A= 200 mm
B= opening height + 1.000 mm
Width max. 5.500 mm

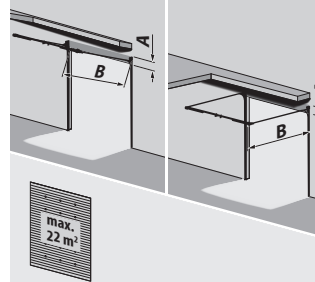
T 240



Low-profile track system, internal cables + steel support profile

A= 240 mm
B= opening height + 1.000 mm
Width max. 7.000 mm

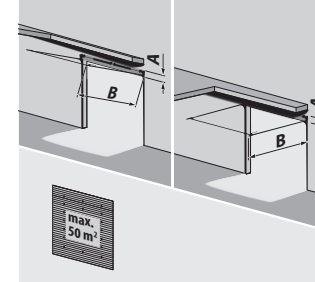
T 340



Normal track system, spring package rear + steel support profile

A= 350 mm
B= opening height + 750 mm
Width max. 6.500 mm

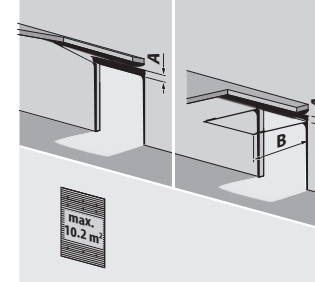
T 450



Normal track system (standard)

A = 430-510 mm
B: Pull cord = DH + 650 mm
Manual hoist = DH + 850 mm
Electric hoist = DH + 850 mm

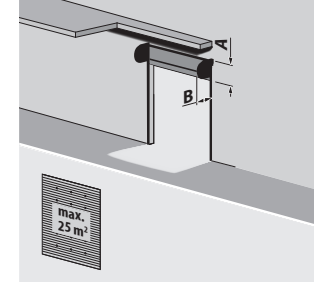
T 450 DDE



Details normal track system with low-lying pre-assembled spring axle

A = 825 mm
B: Pull cord = DH + 650 mm
Manual hoist = DH + 850 mm
Electric hoist = DH + 850 mm
Width max 3.200 mm

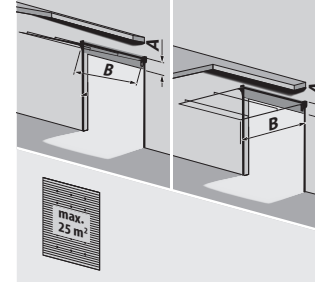
Helix



Details normal track system with low-lying pre-assembled Helix spiral

A = 1100 mm
B= 1200 mm
Width max 5000 mm
Height min. 2500 mm

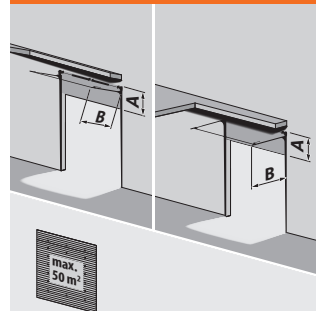
T 600



Helix S600 Horizontal track system

A= 600 mm
B= daghoogte + 265 mm
Width max 5000 mm

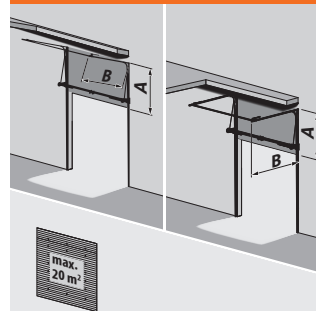
T 400



Raised track system

A= levy + 400 mm
B: Pull cord = DH - levy + 650 mm
Manual hoist = DH - levy + 850 mm
Electric hoist = DH - levy + 850 mm

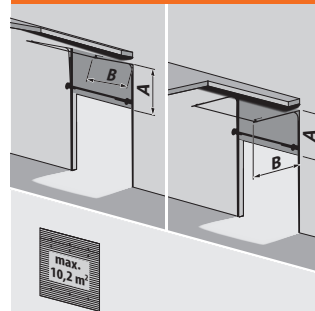
T 400 hF



Elevated track system with low-lying spring axle + steel support profile

A= levy + 200 mm,
B: Pull cord = DH - heffing+ 650mm
Manual hoist = DH - levy+ 850mm
Electric hoist = DH - levy+ 850mm
Width max. 4.500 mm
Minimum levy 1.450 mm

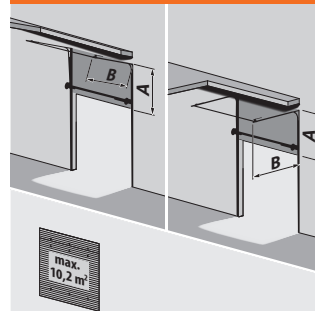
T 400 DS



Elevated track system with low-lying spring axle

A= levy + 200 mm
B: Pull cord = DH - levy + 650 mm
Manual hoist = DH - levy + 850 mm
Electric hoist = DH - levy + 850 mm
Width max. 3.200 mm
Minimum levy 1.700 mm

T 400 DDE



Pre-assembled spring axle

A= levy + 200 mm
B: Pull cord = DH - levy+ 650 mm
Manual hoist = DH - levy + 850 mm
Electric hoist = DH - levy + 850 mm
Width max.. 3.200 mm
Minimum levy. 1.700 mm

T 500



Vertical track system

A= opening height + 560 mm

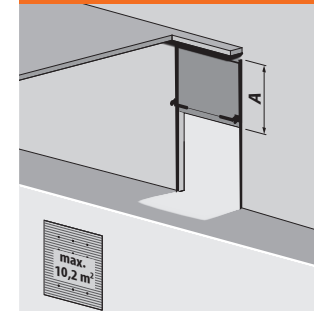
T 500 hF



Vertical track system with low-lying spring axle + steel support profile

A= opening height+ 400 mm
Width max. 4.500 mm

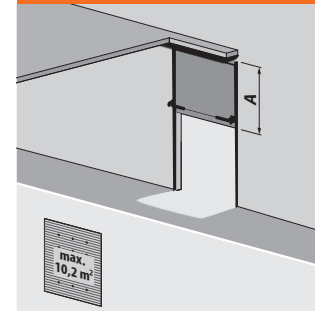
T 500 DS



Vertical track system with low-lying spring axle

A= opening height + 400 mm
Width max. 3.200 mm

T 500 DDE



Pre-assembled spring axle

A= opening height+ 400 mm
Width max. 3.200 mm



NEW
NEW
NEW

SPRINGLESS SECTIONAL DOOR

CONVENIENCE, SPEED AND LOW-MAINTENANCE

Springless sectional doors

Springless door systems reduce required effort for assembly and maintenance, as there are no springs to be tensioned or replaced, increasing safety and opening speed. A powerful motor, motor support and different angular bearing plates provide the same performance as a standard sectional door with balance springs. Springless sectional doors are available with a normal single-speed operator (FLL) or by a frequency-controlled operator where a speed of up to 0.6 metres per second is possible (FLL and FLA).



FLL



FLA

Choose the right sectional door!

When do you use this door instead of a standard sectional door?

Application



Situations with a high user frequency, such as parking garages.



Situations with an increased risk of corrosion.
The absence of springs ensures that these doors (in combination with stainless steel fittings) can be used under certain conditions in, among other things, car washes.



But also with high warehouse racks or storage and/or use of large equipment such as shovels, a sectional door without springs proves its added value. An extra lift is not limited by the range of balance springs. This allows the horizontal part of the tracks to be brought to a great height (extra lift) before it goes around the bend).

Advantages

- ✓ The solution for intensive use of sectional doors, depending on the configuration and choice of FLL or FLA up to at least 100,000 cycles in combination with the number of movements per hour: FLL approx. 20 and FLA approx. 10.
- ✓ Easier to install due to the absence of springs and therefore less strain on them, mechanics.
- ✓ No maintenance on springs, which significantly reduces maintenance costs for the end customer.
- ✓ Possibility of a higher speed with FU motor.

Drive system specification	FLL	FLA
Maximum opening width	6.000 mm	10.000 mm
Maximum opening height	5.000 mm	6.000 mm
Maximum door leaf weight	368 kg	530 kg
Maximum surface area 40 mm doors*	24 m ²	35 m ²
Maximum surface area 40mm doors, heavy*	23 m ²	33 m ²
Maximum surface area 60 mm doors*	21 m ²	31 m ²
Maximum surface area 60mm doors, heavy*	20 m ²	30 m ²
Maximum surface area 80 mm doors**	19 m ²	29 m ²
Applicable to	T200, T240, T340, T400, T450, T500	T400, T450, T500
max. speed	0,2 m/s of max. 0,6 m/s met FU	Between 0,2 m/s and 0,6 m/s (standard with FU)

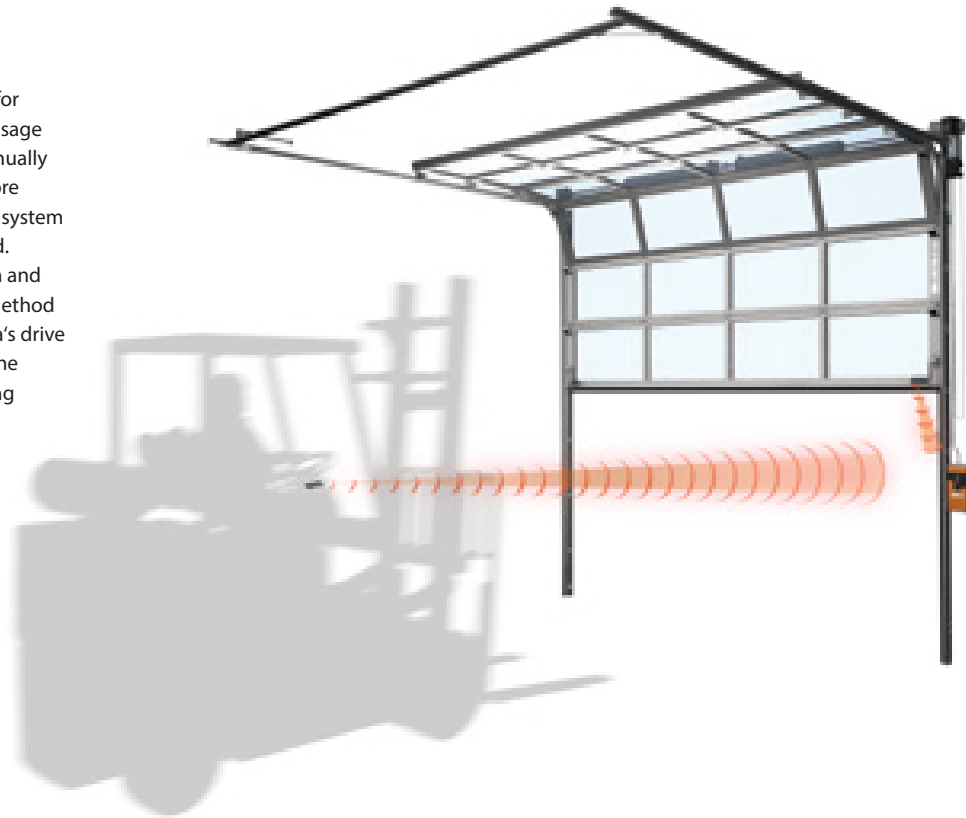
* The maximum door leaf weight is leading; the actual permitted maximum surface area (m2) may differ from the specification.
If you have any questions about this, please contact our sales department.

** In addition to the above comment, the ISO version with a maximum of 2 ALU panels applies to 80mm doors

DRIVE SYSTEMS

MODES OF OPERATION

Alpha offers a range of drive options for sectional doors, tailored to different usage frequencies. For occasional use, a manually operated system is ideal, while for more frequent use, an electrically operated system with impulse control is recommended. Depending on the door configuration and specific needs, there's an operating method to suit every requirement. All of Alpha's drive and operating systems comply with the European standard EN-13241, ensuring safety and reliability.



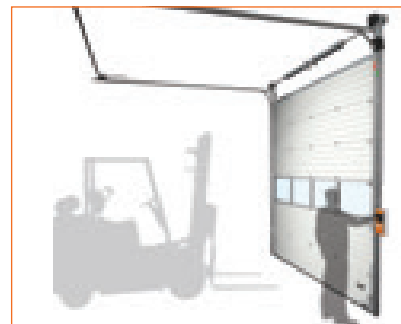
Pull cord- manual

If the door is smaller than 16 m² and used occasionally, a pull cord operation is a practical option. This system requires manual effort, with a transmission ratio of 1:1, making it suitable for less frequent use. There is a possibility that the door may not open fully or sufficiently, potentially causing damage.



Chain reel - manually operated

The chain reel operation requires less physical effort than the pull cord operation (transmission ratio 1:4). The system - suitable for sectional doors up to 30 m² - ensures that the door can be fixed in the upper end position.



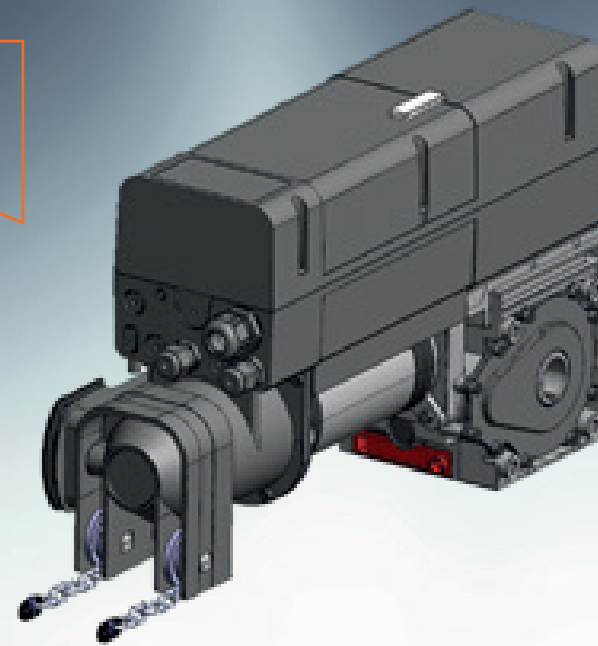
Dead man - electric

This system is ideal for low-frequency use. The door can be opened with just one push of a button, but the button must be held during the closing process. This allows the operator to monitor for any potential hazards during the closing cycle.

INDUSTRIAL DRIVE

SYSTEM DCC 80 SK

NEW
NEW
NEW



HIGHLIGHTS

- Speeds up to 30 r/m- 230 Volt 1-phase connection
- 24 Volt battery backup connectable-
- Additional end position and terminal board (optional)
- Prioritised opening (function like SHEV)
- Traffic light connection available
- Operation for doors with wicket door
- Electromechanical door lock can be connected (EDL 100)
- Maintenance cycles adjustable
- Fault message history via app (last 10 error messages)
- Bluetooth interface
- Prepared for online monitoring

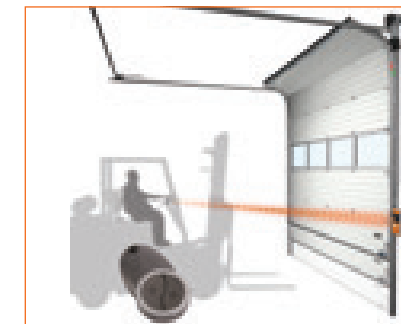
Drive system Tormatic DCC 80 SK

Discover the latest innovation in drive technology: the new DCC drive, powered by advanced DC technology, specifically designed for industrial doors. The DCC 80 combines the benefits of various drive and control systems, offering a highly cost-effective solution. This drive serves as the ideal foundation for enhancing your service capabilities. The DCC 80 is compatible with all types of sectional doors (40/60/80 mm) and supports all standard hardware types.



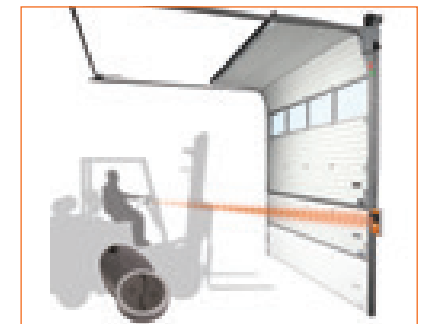
Impulse - electric

Do the doors open and close frequently? Then choose the impulse option. During operation, the door automatically moves to the electronically adjustable end position, without the need to hold down the button. Additionally, an obstacle detection system is integrated into the bottom seal of the door for added safety.



Impulse with remote control

The impulse system is also highly suitable for remote control, offering significant time savings. The forklift driver can remain seated in their vehicle and open or close the door remotely. With this option, the door is additionally equipped with a stationary photocell protection.



Impulse with remote control and highspeed motor

If the door opens and closes frequently, this system is the choice. With its high speed, the door opens extra quickly, helping you save energy. Closing happens at a standard speed. Doors with impulse control can also be equipped with variable speed control for added flexibility.

CONTROLS ON THE CONTROL PANEL



T75 Basic Control

T75 control is a basic control for industrial sectional doors. The T75 is equipped with a 3-button control and connections for closing strips, light curtains, cable breakage switches and wicket door switches (not with low threshold). In addition, the T75 can optionally be equipped with a 433 MHz radio module. It is a deadman control, which is expandable to a limited extent to an impulse control..



T100 Premium Control

T100 control is a comfortable premium control. The T100 features a display integrated in the cover, a 3-button control, a half-opening button and all the necessary connections for locking tracks, light curtains, cable-break switches and wicket door switches. In addition, functions such as automatic closing or door locking can be programmed. The controller is suitable for a motor power of 3 kW. There are also connection options for additional controls.



For operating your sectional doors, Alpha offers a wide range of high-quality control elements that can be built into the control box of the door system. In addition, many elements can also be mounted on the inside or outside wall or on a column, for example. These include safety devices, switches, remote controls, flashing lights and more.



Emergency stop

When current legislation requires it, it is possible to equip the console with an emergency stop button.



Key switch

You can disable the key switch on the control cabinet to prevent unauthorized operation of the door. Only authorized individuals possess a key, which, when activated, allows them to operate the door.



DCC 80 Drive

Introducing the latest innovation in drive technology: the new DCC 80 drive, powered by DC technology for industrial doors. The DCC 80 combines the benefits of various drive and control types in a highly cost-effective solution, making it the ideal foundation for your service. The DCC 80 is suitable for all types of sectional doors (40/60/80 mm) and compatible with all standard hardware types.



Motor with emergency chain

All drive systems come standard with a mechanical emergency control on the reduction gear of the electric motor. This allows the sectional door to be opened even in the event of a power failure. The function must be activated and deactivated manually using switch cords, after which the reduction gear can be operated by the emergency chain.



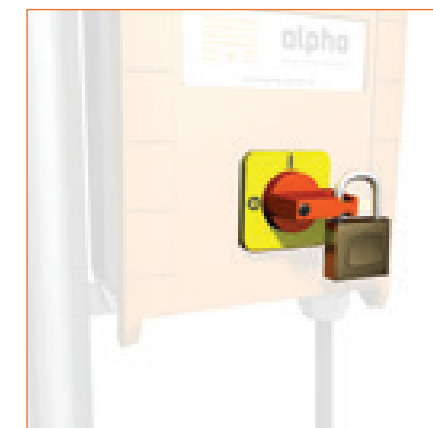
Motor with decoupling

A drive with a decoupling device is also available. In this case, the reduction gear is disconnected from the spring shaft using cables, allowing the sectional door to be opened more quickly by hand in the event of a malfunction. Of course, a sectional door with a decoupling device is also equipped with spring break protection for added safety.



2 position switch

This switch allows you to select between two preset positions. For example, switch it once will open the door to person-height, while switch it twice will open the door fully. This option is ideal for energy savings, as the door doesn't always need to be opened completely.



Main Switch with Padlock

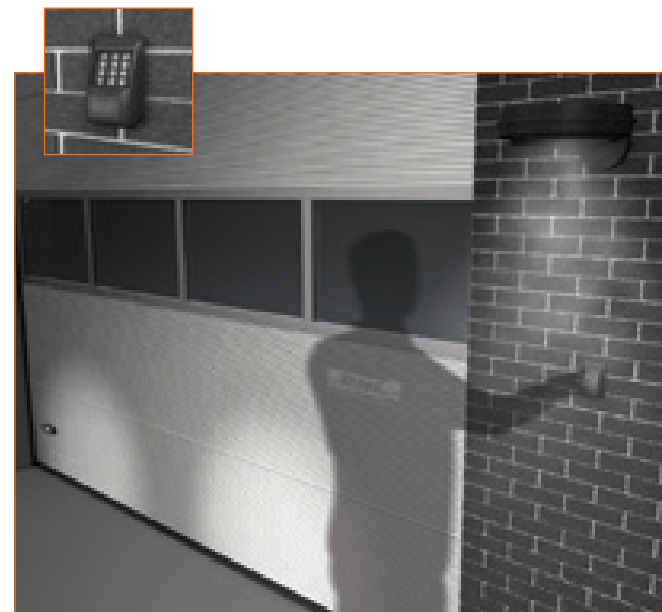
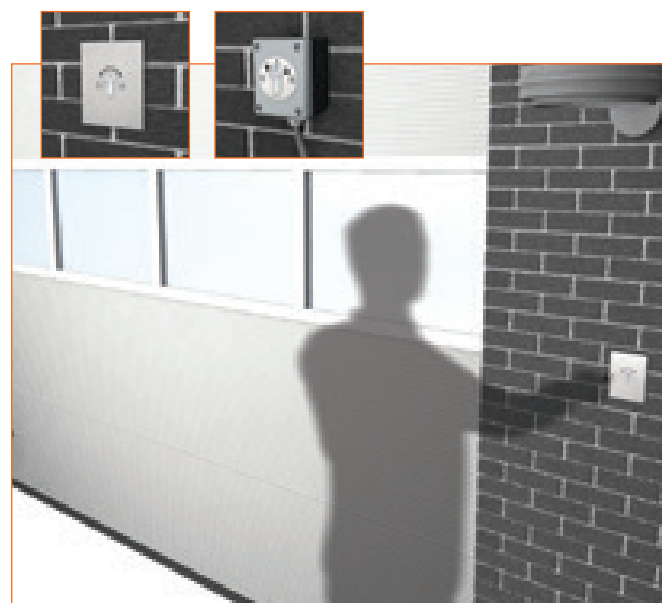
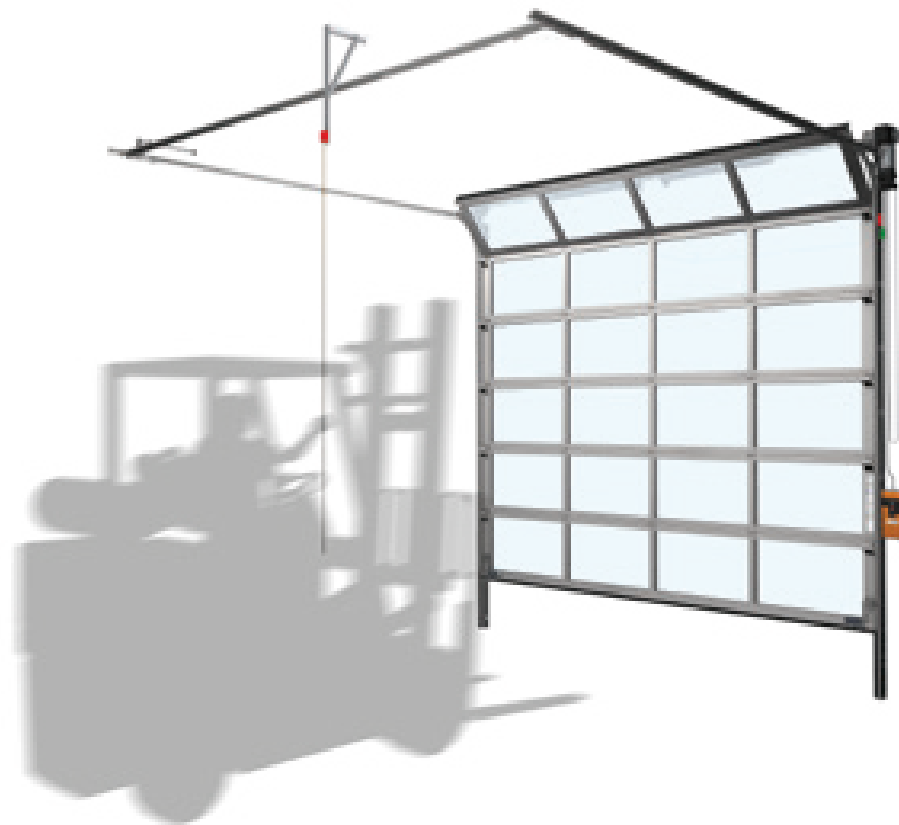
When servicing the door system, the main switch can be used to disconnect the power. By securing the switch with a padlock, you prevent third parties from accidentally restoring power while maintenance is in progress.



Wireless Communication

Typically, the control box and the connection box on the door leaf are connected by a flexible spiral cable, which can be inconvenient and prone to damage. To address this, Alpha Deuren offers connection boxes with an integrated battery that wirelessly transmits signals, such as those from detection devices, to the control cabinet.

EXTRA OPERATING ELEMENTS

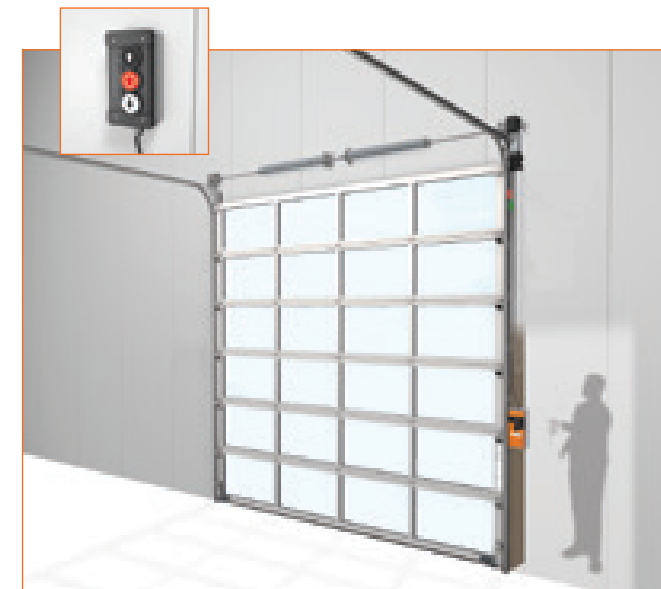


Key switch

The door can be operated with a separate key switch, which can be attached to the outer wall. There are two variants: the flush-mounted version, which is often used in new buildings, and the surface-mounted version, which can be retrofitted in renovation projects without any cutting and breaking.

Electric code panel

To make a doorway accessible 24/7, a door can be operated with a code panel. This is a particularly practical solution for keeping protected pick-up or delivery points accessible day and night for transport and courier companies.



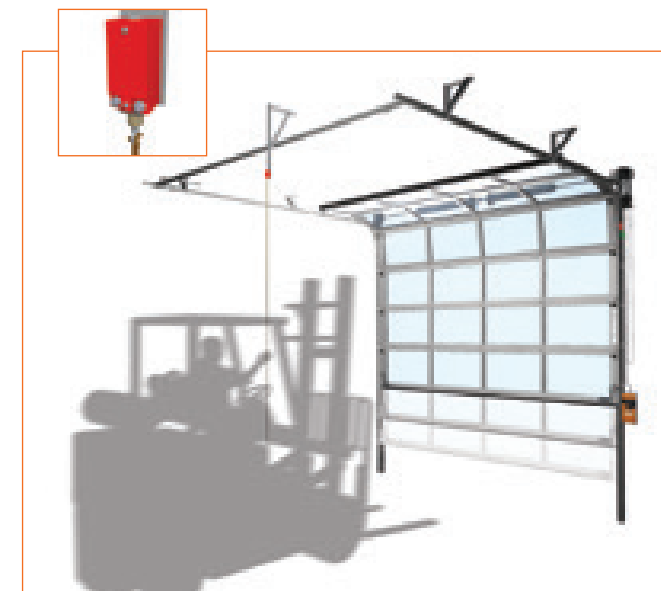
Additional control panel

If a door needs to be operated from multiple rooms or remotely, such as from a porter's lodge, an additional control panel is the ideal solution. This convenient „Up-Stop-Down“ box includes all the buttons found on the standard control box, providing full functionality in a compact form.



Traffic lights and beacons

Voor het voorkomen van letsel aan personen en schade aan de sectionaaldeuren en goederen worden verkeerslichten en zwaailampen aan beide zijden van de deur toegepast. Zwaailampen waarschuwen personen en gaan aan voordat een deur opent. Verkeerslichten regelen het verkeer en voorkomen schade aan deuren.



Pull switch

The pull switch allows the forklift driver to operate the door without having to dismount. It's the perfect solution for environments with many staff members, where providing each person with a hand transmitter is not practical. The pull switch is typically mounted on a stand several metres in front of or behind the door for easy access.



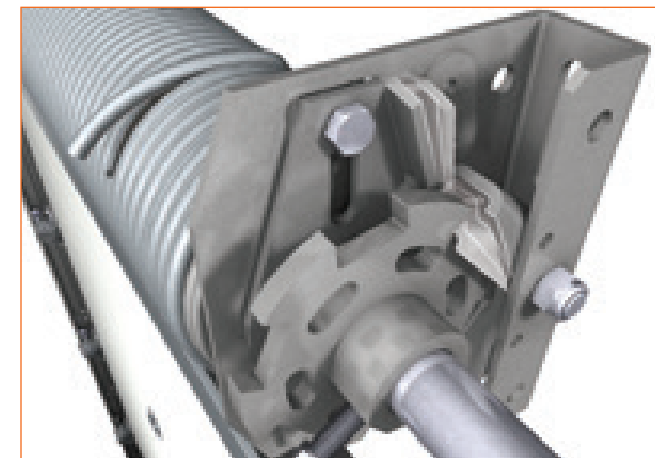
Remote control

Alpha Deuren has already integrated a receiver into the control box of your door as standard. This allows for easy upgrading to a remote-controlled system. You can choose from 1-, 2-, or 4-channel hand transmitters, enabling you to operate up to four different doors..

MECHANICAL SAFETY SYSTEMS



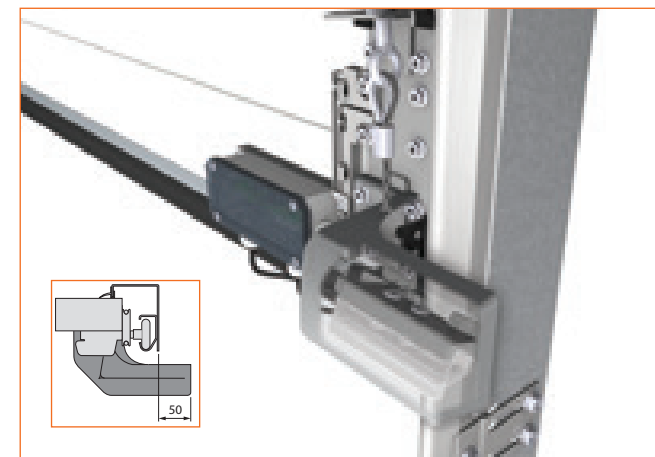
Safety is crucial when operating vertically moving, often heavy sectional doors. That's why Alpha Deuren offers both mechanical and electrical safety systems to prevent the door from hitting people, vehicles, or obstacles, thus avoiding personal injury or damage to the door and/or goods. However, excessive security measures can often be unnecessary and counterproductive, as they may require additional installation and space, and components can interfere with or damage each other. Alpha advises focusing on compliance with the relevant regulations, ensuring optimal security systems that are TÜV Nord certified and meet the highest standards.



Spring break protection

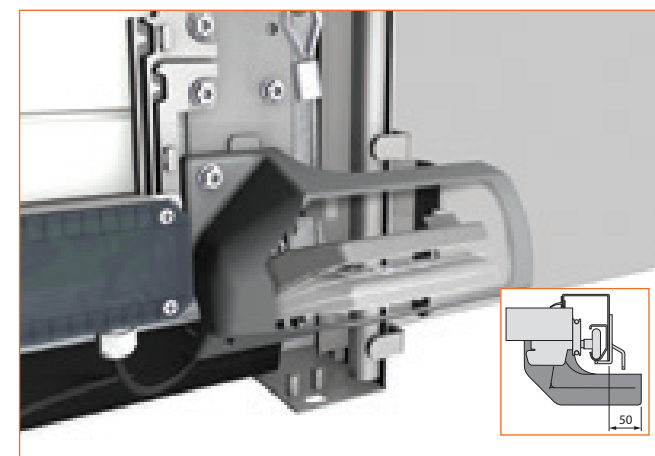
The European standard EN-13241 requires that a sectional door must never fall uncontrollably. Therefore, a manually operated sectional door should be equipped with spring break protection as standard. This protection blocks the spring shaft in the event of a spring failure, preventing the door from falling uncontrollably.

In sectional doors with a drive, the function of spring break protection is provided by a self-locking gearbox, so no additional spring break protection is needed. However, if a motor with decoupling is selected, spring break protection must be used.



Cable break protection

TÜV regulations state that the breaking load of both lifting cables must be six times the weight of the balanced door leaf. If the lifting cables meet this requirement, cable break protection is not necessary. However, if this safety margin cannot be guaranteed, the door will be equipped with cable break protection as standard. In the event of a cable break, this protection activates catch blades in the guide to prevent an uncontrolled closing movement. When cable break protection is used, an additional 50 mm of space is required beside the track.



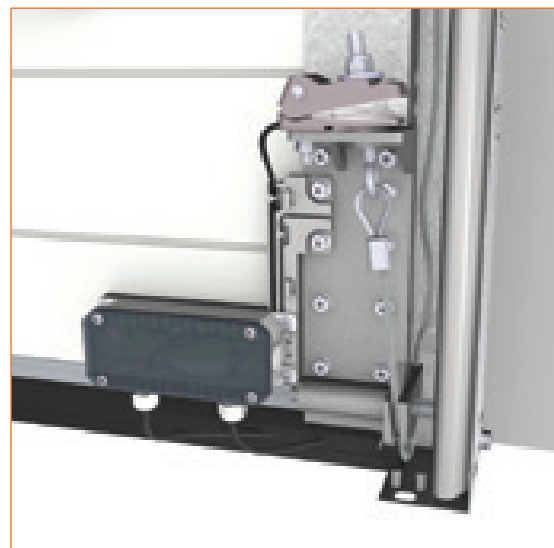
Anti-Lift Protection

Since a sectional door is suspended on flexible cables, an unlocked door can potentially be lifted. The anti-lift protection, particularly for light electrically operated doors, prevents this. Without anti-lift protection, this type of door can be more susceptible to burglary. Manually operated doors are equipped as standard with a spring-loaded mechanical sliding bolt and a lock in the track. When anti-lift protection is used, an additional 50 mm of space is required beside the track.

ELECTRONIC SAFETY SYSTEMS

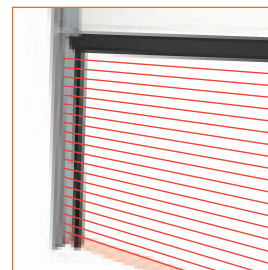
Electric contact strip

The electrical contact strip is perfect for moisture-sensitive environments, featuring a compact, insulated switching chamber that helps reduce condensation. It is also resistant to lateral deflection, making it less affected by wind load and ensuring reliable performance during heavy rain or thunderstorms. With an IP 67 rating for durability, the contact strip is made from 100% recyclable TPE material, which is UV-resistant, lightweight, and resistant to aggressive chemicals, ensuring a long lifespan.



Slack cable protection

This protection is installed on both lifting cables and immediately shuts off the electric motor if one of the cables breaks or sags.



Safety

Sectional doors can be optionally equipped with a light curtain. The light screen is formed with transmitter and receiver sensors in the tracks, so the cabling is in the tracks and not on the door leaf.



Standard safety edge protection

The safety edge protection is integrated into the door's sealing rubber, featuring a transmitter and receiver. If the signal transmission is interrupted by an object or person, the door stops and reverses. The maximum contact pressure with the rubber is 40 kg. If products cannot withstand this pressure, the leading under-run protection should be selected instead.



Leading Edge protection

With this option, the leading edge protection extends 8 cm in front of the door. If the bottom of the door comes close to an obstacle, a signal is immediately sent to the motor, halting the door's movement and causing it to reverse. This protection works without making contact with people, goods, or vehicles.



Stationary photocell protection

Photocell protection is required for motors with impulse control, where the user cannot see the door movement while operating it. There are two types: one with a transmitter and reflector, and one with a transmitter and receiver. In both systems, the transmitter is mounted on the track near the control cabinet, with the reflector or receiver placed on the opposite track. If the beam between the transmitter and reflector/receiver is interrupted by an object, a signal is sent to the motor to stop and reverse the movement. The reflector system is sensitive to dust and moisture contamination, while the receiver version is not.



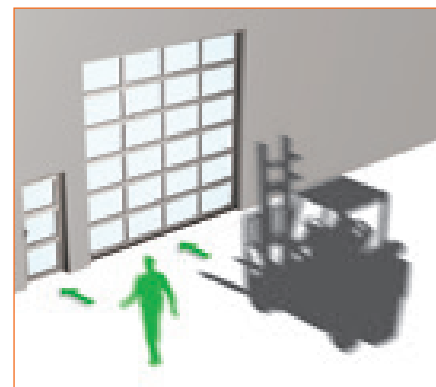


WICKET DOORS 40-60 MM

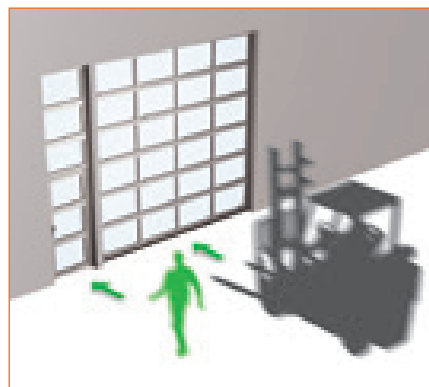
FOR SEPARATING PEDESTRIAN AND GOODS TRAFFIC

A wicket door can be integrated into an Alpha ALU or ISO door. can be integrated.

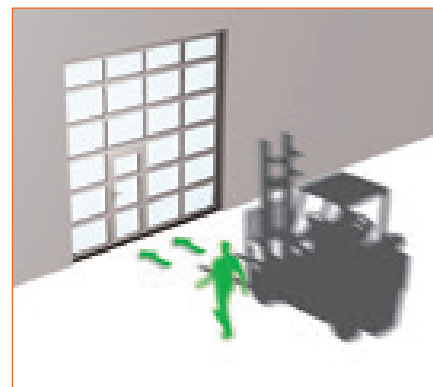
If there is enough space in the facade, it is also possible to install a wicket door next to the sectional door. On the following pages, you will find the specifications for both a separate pedestrian door next to a sectional door and an integrated pedestrian door within a sectional door. This will help you determine the best option for your situation, allowing you to effectively separate pedestrian and goods traffic.



Doors for people and goods, fully separated from each other.



Doors for both people and goods, separated but within the same opening.



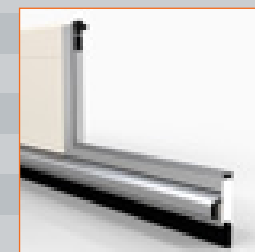
Pedestrian door integrated into the sectional industrial door.



Low threshold 14.5 mm



Low threshold 95 mm



High sill 185 mm
(standard sill)



**NEW
NEW
NEW**

Integrated pedestrian door
- Watertightness class 3
- Airtightness class 3
- Wind class 3 (up to 5000mm width)

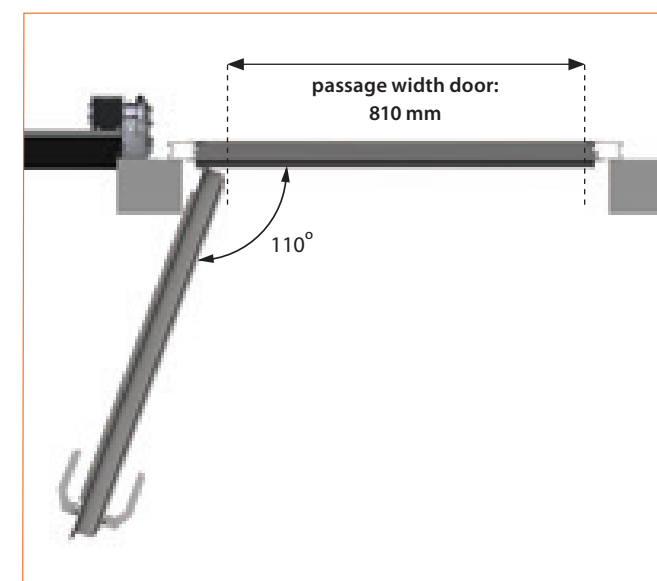
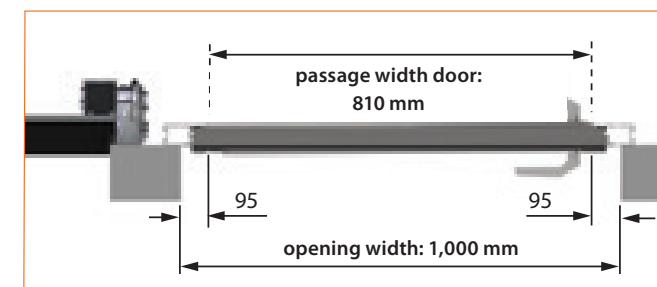
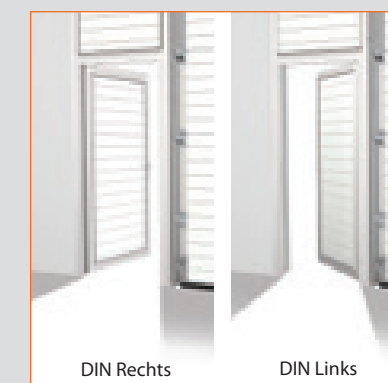
FIXED WICKET DOOR NEXT TO THE SECTIONAL DOOR



The advantage of a fixed pedestrian door is that it completely separates pedestrian and goods traffic, enhancing the safety, usability, and stability of the sectional door. It also offers the benefit of reduced energy loss, as the entire sectional door does not need to be opened. A fixed pedestrian door is installed in the facade next to the sectional door, with the same filling and panel structure as the sectional door's top panel. This creates a cohesive, architecturally and aesthetically pleasing solution. The connection between the sections of an ALU 60 door is wind and watertight, and special insulation profiles prevent heat transmission.

Choose the right door

A fixed wicket door can open inwards or outwards. You can choose between a DIN left- or DIN right-handed door. If the wicket door is also to be used as an escape door, the wicket door must always open outwards.



Mounting behind or in the opening

A sectional door is always fitted behind the opening. This means that if you also want to have a fixed wicket door fitted in the same façade, we also fit it behind the opening as standard. This has two advantages: both doors are in the same line and the passage width of the wicket door, for an opening width of 1,000 mm, is 810 mm ($1,000 + 50 - 240 = 810$ mm). The first point yields an aesthetically pleasing result, the second a gain of 60 mm compared to an installation in the opening. With an installation in the opening, the door surfaces are at unequal depth from each other and the passage width, with an equal opening width, is only 750 mm ($1,000 - 10 - 240 = 750$ mm).

INTEGRATED PEDESTRIAN DOOR IN SECTIONAL DOOR

NEW
NEW
NEW

Alpha's new leading wicket door: elegant design and top functionality in one:

- Water tightness class 3
- Air tightness class 3
- Wind load class 3 (up to 5000 mm width)
- Perfect connection thanks to continuous seals
- Elegant appearance thanks to flush-fitting wicket door
- Concealed hinges on each panel
- Simple fitting and replacement
- Adjustable door closer with soft-close function
- Applicable as an escape route in compliance with European standards
- Available with different threshold variants
- Continuous threshold with rubber under full width
- High level of convenience and safety
- Wide range of options
- Available with various light sections
- Non-contact monitoring thanks to leading photocells
- Measurement of closing force is not necessary (for 14.5 mm threshold)
- Simple mounting
- Watertightness class 3
- Service-friendly and safe

UNIQUE
IN THE
MARKET

Beautifully designed pedestrian door

Alpha Deuren has recently made significant improvements to the pedestrian door's design. Notably, the hinge system is now integrated into the sectional door, concealing any fixings on the exterior and creating a more streamlined look with less prominent standard ALU pedestrian door profiles. Optional: coloured pedestrian door profiles

Optional: coloured wicket door profiles

When choosing a coloured ISO or ALU sectional door with an integrated pedestrian door, the pedestrian door profiles are not automatically painted to match the door colour. However, this option is available upon request. Some prefer a clearly visible pedestrian door, while others favour a more discreet look. Alpha Deuren offers both options to suit your preferences.

UNIQUE
IN THE
MARKET

Enhanced Patented Water Drainage System

If your building cannot accommodate a fixed pedestrian door in the facade, Alpha Deuren can integrate a pedestrian door directly into the sectional door. The updated integrated pedestrian door offers a seamless fit with continuous seals and is easier to install due to adjustable hinges, allowing for precise adjustments over time. Additionally, the pedestrian door panels can be replaced during maintenance without needing to reinstall the entire door. The new pedestrian door is available with thresholds of 14.5 mm, 95 mm, and 185 mm.



Compartmenting

For the stability of the sectional door, a wicket door can never be positioned in the outer fields. The illustration shows where the door can and cannot be positioned. Wicket doors can be used in sectional doors up to a maximum door leaf width of 6000 mm. The wicket door must be positioned at least 500 mm from the side of the sectional door.



Panick lock

A pedestrian door that serves as an emergency exit must be equipped with a panic lock. Panic locks come in various versions and allow the door to be unlocked at any time from the inside using the latch, even when the night latch is in the locked position.



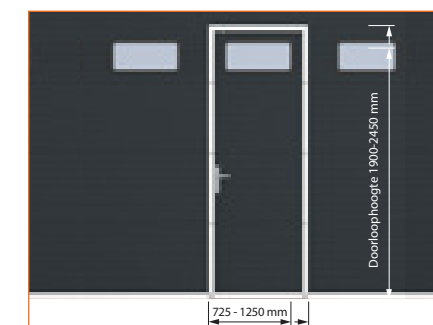
Integrated pedestrian door switch

The pedestrian door switch, mounted beneath the ridge catcher, is an integrated safety feature that prevents the sectional door from operating when the pedestrian door is open.



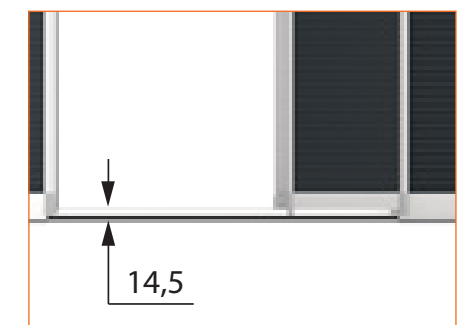
Catch cam

The pedestrian door is securely held in place by catch cams, ensuring the door remains stable without sagging. This system also provides a tighter seal between the pedestrian door and the main door. Additionally, the magnetic contact for the pedestrian door switch is mounted beneath the catch for enhanced reliability.



Door width and height

Depending on local or national regulations, legislative and supervisory authorities may prescribe a minimum width and height for a pedestrian door that must function as an emergency exit. The maximum width for an integrated pedestrian door is 1250 mm, and the maximum height is 2450 mm. It is advisable to consult with local authorities if the pedestrian door is intended to serve as an emergency exit.

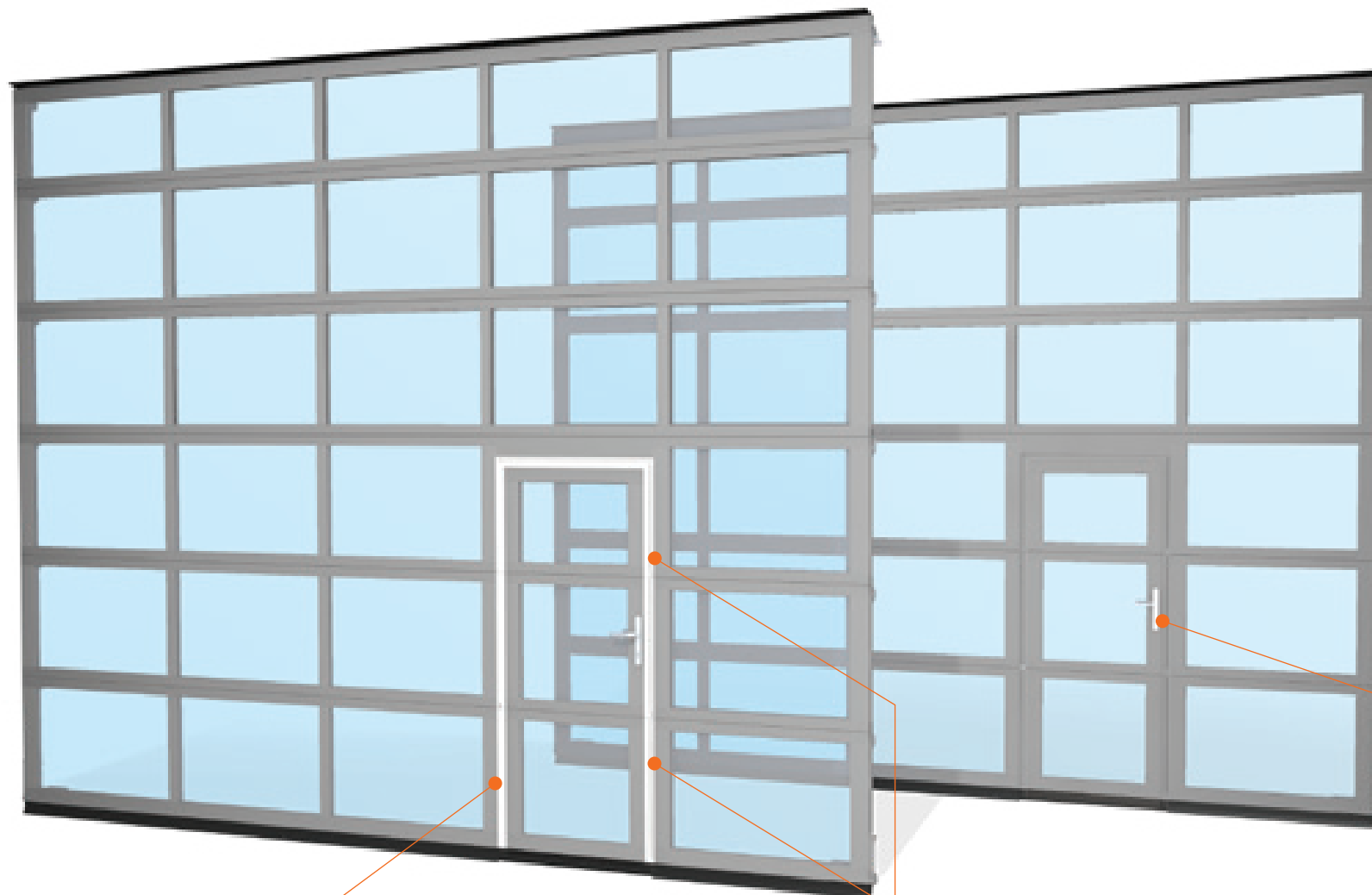


14.5 mm Low sill variant

With a 14.5 mm threshold, the wicket door can be used as an escape route in accordance with European standards (legislation may vary from country to country).

WICKET DOORS ACCESSORIES AND OPTIONS

Alpha Deuren invests significantly in optimizing the integration of pedestrian doors within your sectional door. We prioritize safety, ease of use, and the most aesthetically pleasing application of hinges, switches, additional locks, and latches. We are also happy to provide detailed advice on selecting threshold heights, swing directions, door dimensions, and door placement to suit your needs.



Coloured wicket door profiles

When choosing a colored ISO or ALU sectional door with an integrated pedestrian door, the pedestrian door profiles are not typically sprayed in the same color as the door. However, this can be customized based on your preference. Some may opt for a pedestrian door that is clearly visible, while others may prefer a more inconspicuous design.



Additional locks

For added security, you can opt for two additional locks, mounted in the top and bottom sections of the pedestrian door. All cylinder locks are operated with the same key. These additional locks are equipped with rotary knobs, allowing them to be opened without a key.



The Alpha wicket door lock range includes six lock types;

The Alpha Deuren pedestrian door lock range includes six lock types: two standard locks and four panic locks, designed for use when the pedestrian door functions as an emergency exit.

Normal locks

- Lock with handle on both sides
- Lock with fixed door plate on the outside and handle on the inside

Panic locks

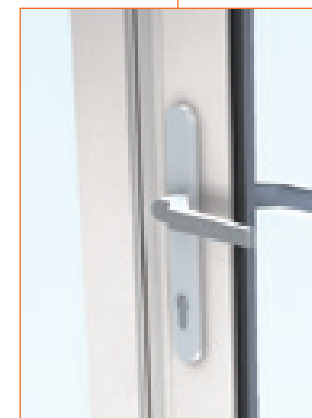
- Panic lock with a fixed door panel on the outside and a handle on the inside (panic function E)
- Panic lock with handle on both sides (split tumbler, panic function B)
- Panic lock with a fixed door panel on the outside and handle on the inside (panic function E)
- Panic lock with handle (split tumbler) on the outside and push bar on the inside (panic function B)

The fire brigade requires the use of panic locks depending on the situation.



Panic lock, with panic function E

The panic lock Type E allows the door to be locked and unlocked from the inside with a key at all times. By operating the inside handle, both the latch and night latch are simultaneously engaged into the lock. The panic release function can only be activated when no key is in the cylinder. From the outside, both the night latch and day latch can only be operated with a key. This lock is ideal for pedestrian doors serving as emergency exits but should not be used as an entrance during the day.



Panic lock, with panic function B

The operation of the Panic Lock Type B from the inside is the same as the Panic Lock Type E. However, on the outside, there is a handle that can be locked or unlocked. This allows the door to function as an entrance during the day, if desired.

How the Lock Functions

The pedestrian door can always be locked and unlocked from the outside using the key. When the night latch is engaged and locked with the key, the outside handle is deactivated, and no action occurs when the handle is turned. The lock can only be operated again when the cylinder is turned with the key, which reactivates the outside handle.



HELIX/S600

RENEWED - INCLUDING ADVANTAGEOUS, FAST

Frequently used doorways were often equipped with two doors: one for night-time closure and the other for daytime use. The new Alpha Deuren Helix/S600 eliminates the need for a high-speed door behind the overhead or roller door. This door is both fast and highly insulated.

An investment that quickly pays for itself!

The S600 features the same drive system as the Helix spiral door, but is equipped with a standard track system. This door opens up to six times faster than comparable sectional doors and can be installed with just 600 mm of headroom. The standard panel height for both the Helix and S600 is 366 mm. If you have the required installation space, the S600 offers the benefits of the Helix at a more cost-effective price.



The best of all worlds, the Helix and S600

Speed

The Helix spiral door opens 6 times faster than comparable sectional doors, making it highly suitable for environments with high daily logistical traffic. Thanks to its rapid opening speed—up to 1.1 m/s depending on the door size—significant energy savings can be achieved.

Energy-efficient

The door leaf has a thickness of 40 mm and a thermal transmittance (U- γ -value) of 1.77 W/m²K (for ISO Panels, door dimensions 5,000 x 5,000 mm). If viewing and light windows are needed, attractive, elongated aluminum sections are available.

Space-efficient

The Helix spiral door from Alpha Deuren is a modern innovation that requires minimal installation space, thanks to features like the spiral system and chain drive. Unlike traditional folding doors, the Helix rolls up, with the panels not touching each other, preventing wear and tear. The Helix is particularly beneficial in spaces where the ceiling structure does not allow for the installation of a conventional overhead door.

The Helix door offers a longer low-maintenance period and a service-friendly solution in the event of damage. With a guaranteed 200,000-cycle low-maintenance period and no springs in the system, there are no additional costs for spring replacement. Furthermore, the uprights are designed in two parts, making it easy to quickly replace the panels, even with a 600 mm headroom, providing a simple and cost-effective alternative to sectional doors.

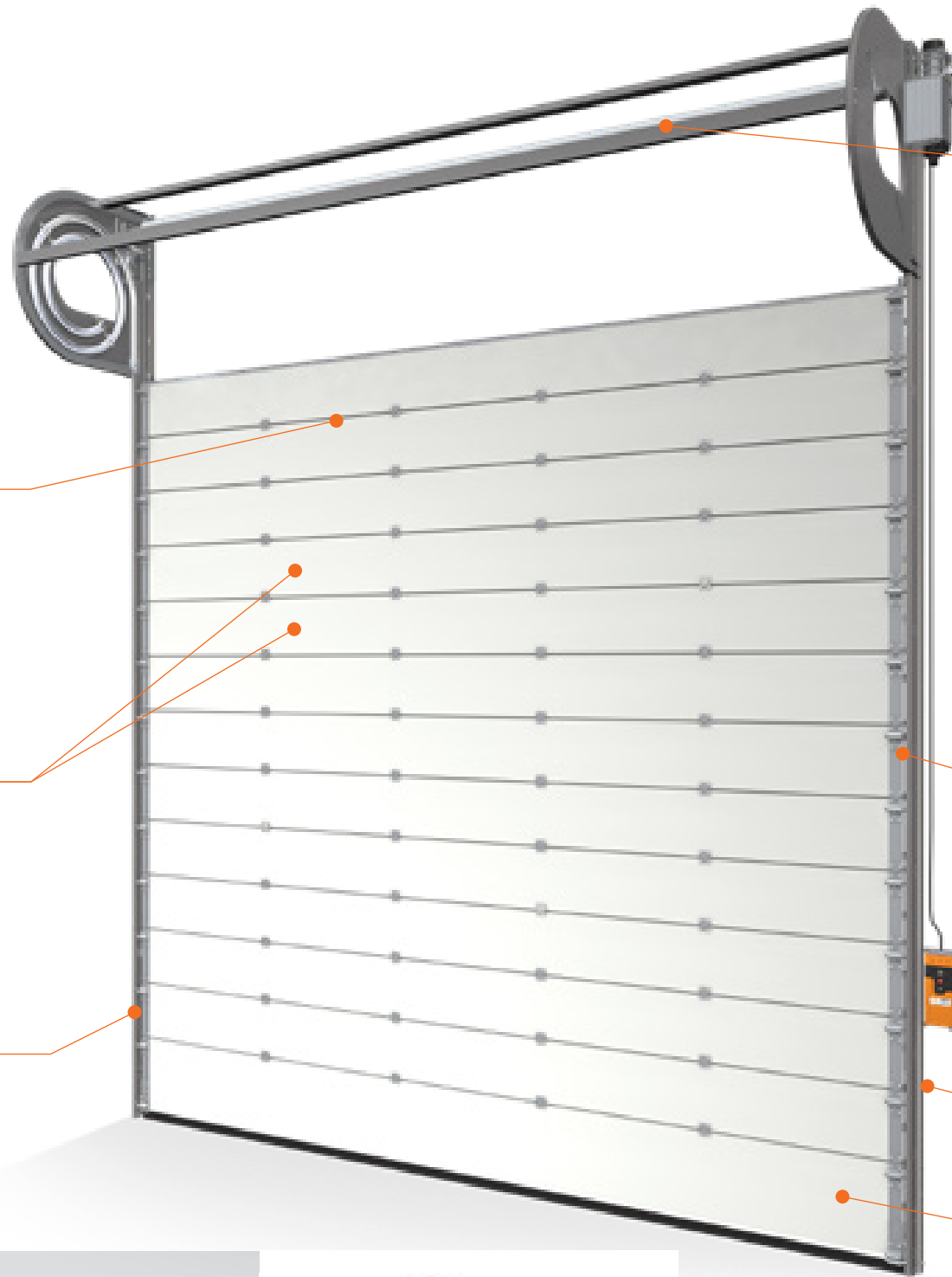
Applications

- Logistics
- Automotive industry
- Mechanical engineering
- Metal and electrical industry
- Chemical and pharmaceutical industry

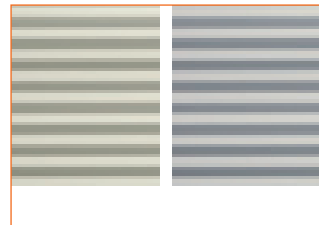
U-VALUE Spiral door with ISO panels:
5000x5000 mm 1.77 W/m²K
U-VALUE Spiral door with ALU sections:
5000x5000 mm 4.25 W/m²K

TECHNICAL DETAILS

HELIX S600



Connection panels
The connection between the ISO panels and ALU sections is wind- and watertight (Class 3 Wind Load).



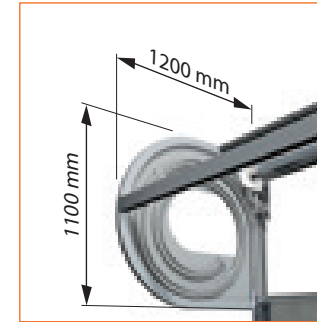
Colours
Do you have specific colour preferences? Alpha also offers a wide range of colour options to choose from.



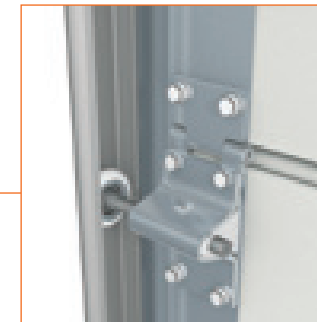
Safety
Both the Helix and S600 come standard with a light curtain. The light curtain consists of transmitter and receiver sensors integrated into the tracks, keeping the wiring within the tracks rather than on the door leaf. This design enhances the operational reliability of these high-speed spiral doors.



Torsion pipe
The Helix spiral door and the S600 are equipped with a directly driven aluminium torsion pipe without auxiliary spring constructions.



Built-in space
The Helix spiral door rolls up compactly into a package against the inside wall of the hall. The required installation space at the top of the track is 1100 x 1200 mm, as side space you need 120 mm on the non-drive side and 350 mm on the drive side.



Compact side hinges
Flat-fitting adjustable side hinges that barely protrude are therefore extra secure. The hinges ensure a perfect vertical seal.



Drive concept
The continuous chain/steel cable system ensures precise control of the door's movement at all times.

Specifications	Helix	S600
Max. door leaf surface	25 m ² (350 kg)	25 m ² (350 kg)
Max. width	5000 mm	5000 mm
Max. height	5000 mm	5000 mm
Panel height	366 - 610 mm	366 - 610 mm
Opening speed	max. 1,1 m/s	max. 1,1 m/s
Closing speed	max. 0,5 m/s	max. 0,5 m/s
Panel thickness	40 mm	40 mm
Panel connection	Finger clamp protected	Finger clamp protected
ALU sections possible	ja	ja
μ-value at 5,000 x 5,000 mm	1,77 W/m ² K (completely closed)	1,77 W/m ² K (completely closed)

PRODUCT BENEFITS

- Low-maintenance (200,000 cycles), spring-free system
- Leading photocell or light barrier (without wiring on door)
- Class 3 wind load
- High insulation value
- Short assembly time due to pre-assembled track / drive system
- High opening speed



Structure of door surface

Helix and S600 door leaves are constructed as shown in the table below. The bottom panel of an ALU door structure is always an ISO panel.

	ALU		ISO	
	Min	Max	Min	Max
Floor panel	-	-	366 mm	610 mm
Partition panel	250 mm	366 mm	366 mm	366 mm
Top panel	275 mm	366 mm	250 mm	366 mm



DOCK DOOR EASY INSTALL

UP TO 40% FASTER
INSTALLATION TIME

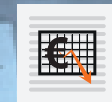
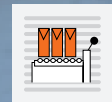
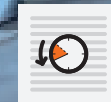
Dock Door Easy Install
In recent years, there has been a significant rise in the construction of large industrial buildings. These XXL buildings, which feature numerous loading docks, are the result of economic growth and the increasing demand for online orders. To meet the tight schedules of such construction projects, quick assembly is essential.

The Dock Door Easy Install was developed with this need in mind, allowing for rapid installation. Alpha Deuren has ensured that additional production costs are not included in the sales price. The tracks and motors are packed separately, but the sales price remains the same as the DS version, giving you a competitive advantage when securing larger projects.

Available in 9 identical pieces, the Dock Door Easy Install comes in 40 mm, 60 mm, and 80 mm thicknesses, making it perfect for distribution and logistics centres.



Time saver
Depending on the situation, assembly time reduces by up to 40%. In practice, this means that 5 doors can be assembled per day instead of 3 in the same time!



Shorter assembly time

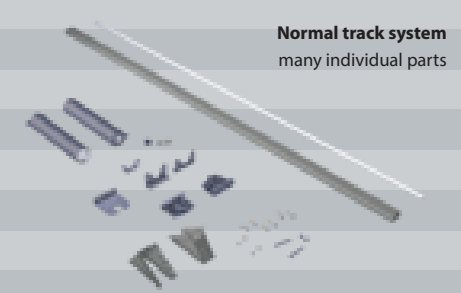
- The dock door Easy Install consists of a sectional door with a lowered spring package.
- The difference with other track systems is that the spring package is already pre-assembled in our production.
- Previously, these were separate parts that still had to be assembled on site, regularly at a height of >3 metres.

Optimal efficiency

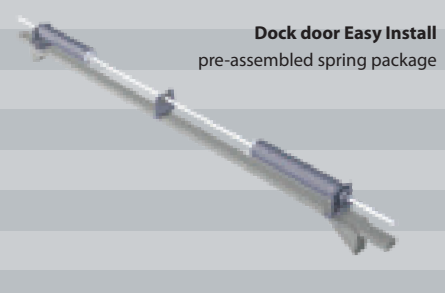
- The Easy Install dock door is packed differently from standard doors: panels are packed per 3 doors on a pallet. Tracks and motors are packed separately. This allows you to work more efficiently.
- This solution is also more environmentally friendly because less packaging material is used.
- Fewer packaging materials, so less material to dispose of.

Lower costs

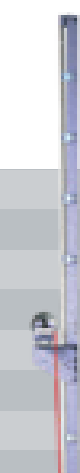
- Fewer packaging materials result in a lower disposal fee.
- Shorter assembly time, in addition to labour costs, also reduces additional costs such as renting an aerial platform if assembly can be done in a shorter time.



Normal track system
many individual parts



Dock door Easy Install
pre-assembled spring package



Cable system
In addition, the steel cables no longer run upwards, but directly from the bottom console to the cable drum.



T450 DDE T400 DDE >1800 mm T400 DDE <1800 mm T500 DDE



Garage
doors

Alpha Deuren garage doors provide significant advantages over other suppliers:

- **Consistent Quality:** The steel thickness in the track system and fittings matches that of Alpha Deuren industrial doors.
- **Standardized Parts :** We use the same parts and materials as our industrial doors, meaning no additional components are needed for installation.
- **No Compromises:** At Alpha Deuren, outside of the standard means -no standard—avoiding disproportionately high costs or longer delivery times!

High Quality – Optimal Performance

In modern architecture, the traditional tilt-and-turn garage door is increasingly being replaced by the sleek and highly functional sectional door. This stylish solution is available in seven door leaf variants, offering



The concept and construction are based on extensive experience in professional sectional door manufacturing. As a result, the finishing profiles are both durable and robust. The sectional garage door is a high-quality, sustainable product, offering exceptional performance in terms of aesthetics, thermal efficiency, and structural integrity.

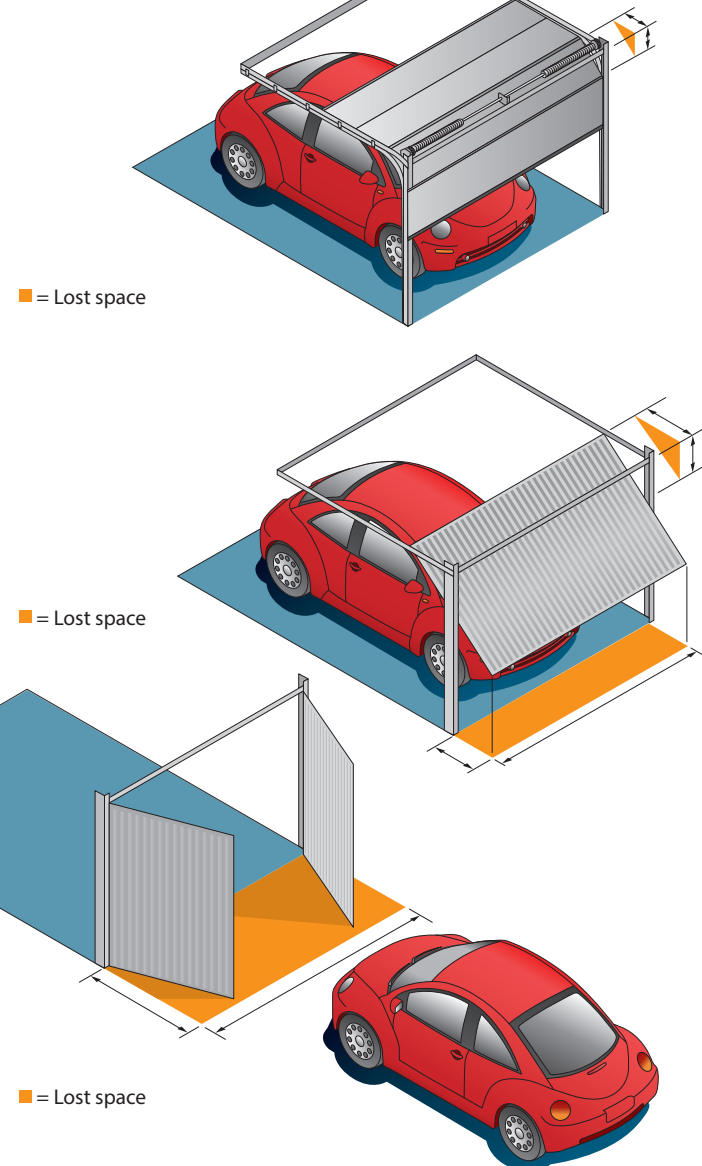
Sectional garage doors are produced using the latest technology and carry TÜV NORD certification. These trend-setting doors seamlessly integrate into modern architectural designs. Built to meet the latest safety and user-friendliness standards, sectional garage doors can be operated both electrically and manually. The sectional garage door is truly the garage door of the future.



both aesthetics and comfort. Thanks to its innovative design, the sectional garage door ensures maximum safety with minimal risk of pinched fingers and uncontrolled closing movements.

The sectional design also maximizes space inside and in front of the garage. The door operates vertically, guided close to the façade and roof. Fully customizable, the sectional garage door is made to measure, ensuring a perfect fit and seamless integration with your home....

Required (lost) space to open and close a garage door opening and closing.

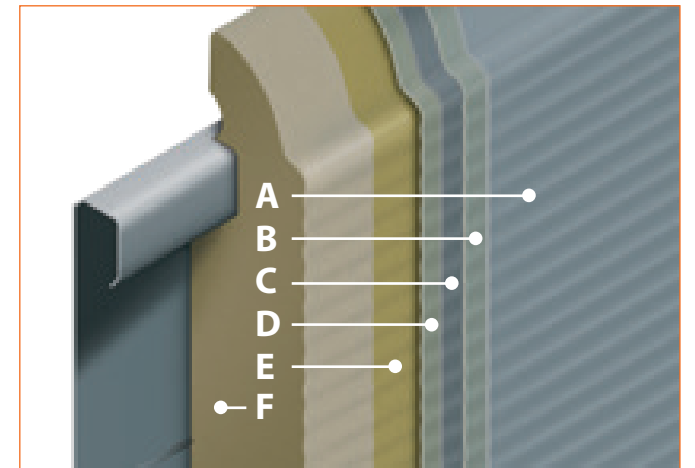


A SUITABLE PANEL FOR EVERY ARCHITECTURAL STYLE

ISO Panel Door Leaves

ISO garage door systems are constructed using ISO panels, with the door leaf tailored to the specific dimensions of your garage. The panel length varies based on the width of the garage opening. These ISO panels are manufactured using the “sandwich principle,” consisting of a core of CFC-free polyurethane foam, which is bonded to double-sided galvanized sheet steel. The visible sides of the steel are coated with a protective lacquer. The panels are connected lengthwise and hinged together, with the top and bottom designs minimizing the risk of finger entrapment during operation. This high-quality, weather-resistant, and corrosion-resistant door is built to last, with no compromises made in the choice of materials, panel thickness, or the specific weight of the polyurethane foam.

Panel thickness:	40 mm
Heat conduction:	$\lambda = 0,025 \text{ W/mK}$
Insulation value:	$k = 0,59 \text{ W/m}^2\text{K}$
Noise reduction:	R'w 26 dB
Specific gravity PU Foam:	ca. 40 kg/m ³



Sandwich construction ISO panel

A. Paint layer:	in 6 standard colours, in 7 panel variants
B. Zinc coating:	275 g/m ²
C. Steel sheet:	0,5 mm
D. Zinc coating:	275 g/m ²
E. Primer coating	
F. PU high density foam:	$g = 40 \text{ kg/m}^3$, CFK en H-CFK vrij

SmartHome for garage doors

Smartphones are the new remote controls

Make garage doors smarter with the SmartHome app!

Smart technologies provide even more convenience for operating garage doors. A smart garage door not only simplifies opening and closing but also offers a range of additional features, such as automatic status checks and intelligent control of the drive lighting. By connecting the garage door drive to a standard router and the included WiFi module, the entire system can be easily set up and controlled through a smartphone app.

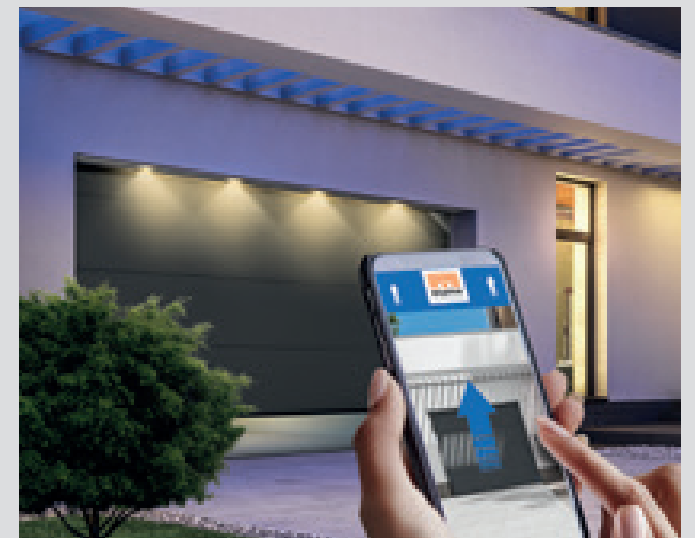
The benefits of a smart garage door:

- Opening and closing via an app on smartphone or tablet
- Various smart door control functions
- Easy integration with existing SmartHome systems

Extra features:

- Control the entire SmartHome with one app
- Check the door status via the app
- Control the operator lighting
- Control the ventilation mode for optimal garage ventilation*
- Control multiple garage doors with one app

* Functions depend on the SmartHome partner, components and release.



Requirements for SmartHome:

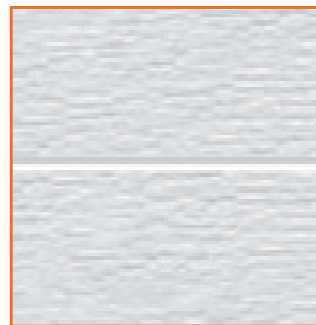
- Garage sectional door with Tormatic operator
- Wifi connection with router
- Mobility package (transmitter module and gateway)
- Photocell protection
- Free SmartHome app

PANEL VARIANTS

A sectional garage door with cladding options

Sectional garage doors featuring a door leaf made from ISO panels are available with seven cladding options for the exterior. The interior cladding is supplied in RAL 9002 color. The panels come in two standard heights: 488 mm and 610 mm. By combining both panel heights and adding a matching top profile, any door height can be customized without compromising the stability and strength of the top panel, as it does not require cutting to size.

Woodgrain + Mid-profile



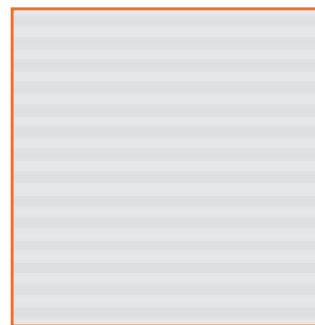
RAL 9016

Woodgrain + Hor. prof.



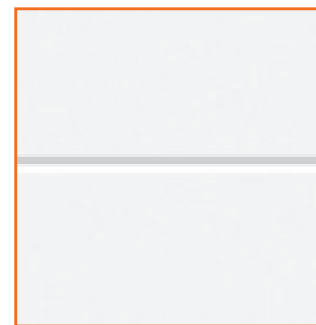
RAL 9016

Micro 8 mm



RAL 9016

Mid-profile



RAL 9016

Vlak



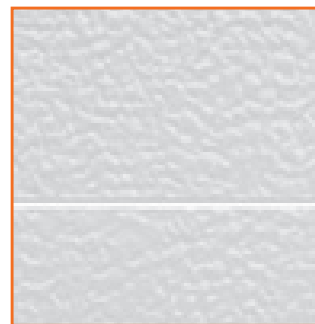
RAL 7016

Stucco + Hor. profilering



RAL 9016

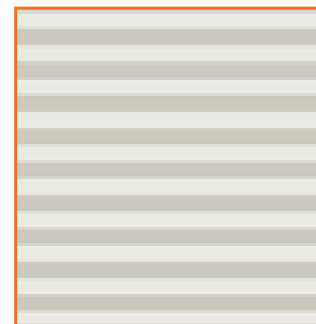
Stucco + Hor. profilering



RAL 9016

Interior

Micro 12 mm



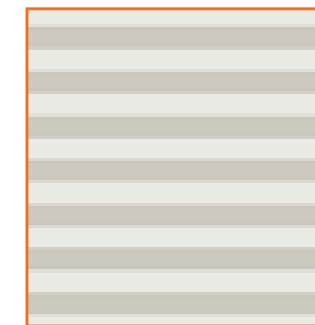
RAL 9002



Micro 16 mm



RAL 7016



RAL 9002

Achieving a harmonious colour match with your home

The sectional garage doors can be customized to match the colour style of any home. Alpha Deuren has designated one or more standard colors for each door leaf type, but you can also order the door leaf in any color from the RAL colour palette. We generally recommend avoiding dark colours, as prolonged exposure to sunlight may lead to foam cracking and panel deformation. The paint is applied using the wet paint technique, providing the sectional garage door with additional protection.

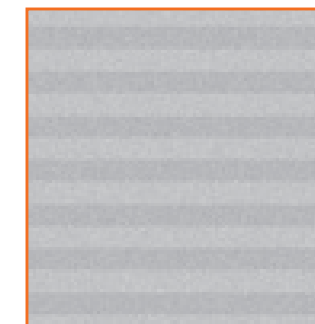
Colours

The final shade of the colour on the panel is influenced by the substrate and the method of application, which can vary from one manufacturer to another. This may lead to slight shade differences within the same RAL colour. Therefore, facade elements from different manufacturers, even if they are all in the same RAL colour, may show some variation in tone.

Panels can also be supplied in special colour, even if they are based on different color palettes. When color samples are provided, we strive to match the color as closely as possible to the RAL palette.



RAL 9016



RAL 9006

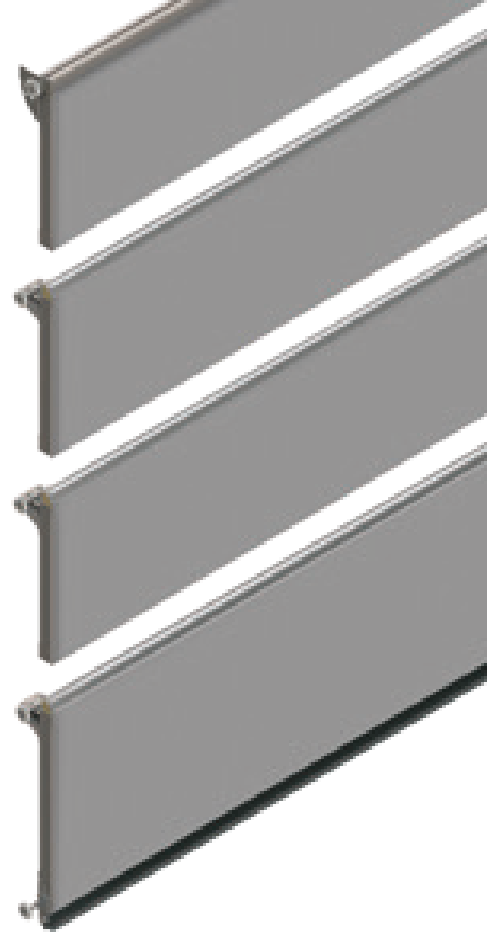


RAL 9007



DOOR LEAVES

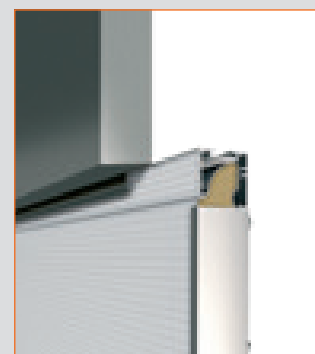
Any gap between the door leaf and the lintel beam above is seamlessly filled using a top profile. The profiles for door leaves constructed from ISO panels are available in heights of 32, 62, and 92 mm. For door leaves with micro profiling, the visible side of the top profile is also finished with matching micro profiling. The aluminum profile at the bottom serves as a base for the door seal, and is designed to be concealed from the outside. All external aluminum profiles are anodized and coated to match the colour of the door leaf, ensuring a sleek, unified appearance.



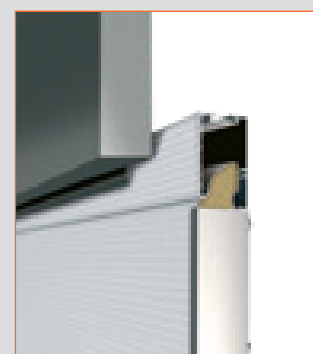
CONDUCTOR SYSTEM

The guidance system stands out for its unique design, material selection, and finish. Safety, durability, and reliability are always the key considerations when shaping the guide tracks. Naturally, all materials used are galvanized to a high standard. All connections are secured with nuts and bolts, ensuring an extremely service- and assembly-friendly method. The guide Tracks are custom-profiled in-house according to our own design, with great attention given to the production process.

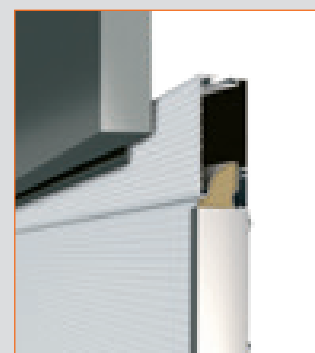
The choice of materials and the design of the guide rollers ensure quiet and precise movement of the sectional door. This roller construction has proven its reliability in professional sectional door applications, making it ideal for use in sectional garage door construction. Continuous optimization of existing structural solutions, based on practical experience, has led to guide tracks being designed with added safety features to prevent injuries. The steel cables are securely routed through the two vertical guide tracks.



32 mm

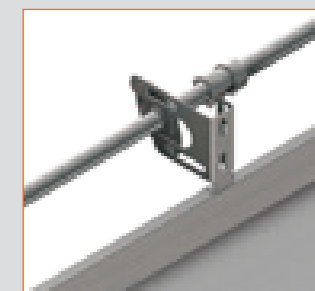


62 mm

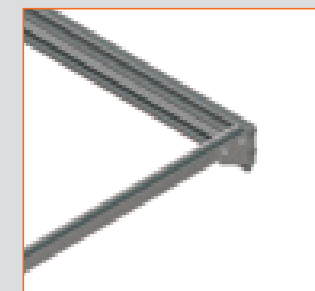


92 mm

The guide track system is available in three variants. The main difference between the variants is the position of the torsion spring package. The choice of guide track system is determined by the available free space above the lintel beam.



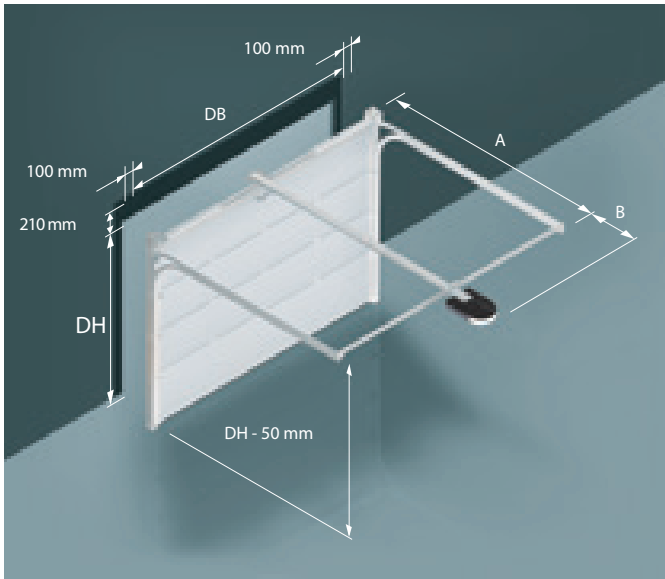
The lintel beam is located above the garage opening. If the space above the lintel beam in your garage is small, a guide track system is used where the torsion spring package is mounted at the back between the horizontal guide tracks. Additional rollers are fitted to guide the steel cables.



If there is sufficient clearance above the lintel beam, a guide track system is used where the torsion spring package is located above the door leaf.

The required free space in the garage depends on the opening height of the door opening and the chosen operating variant (manual or automatic). The exact installation dimensions can be found in the tables below the dimension drawings. The term “DH” refers to the opening height when the garage door is open.

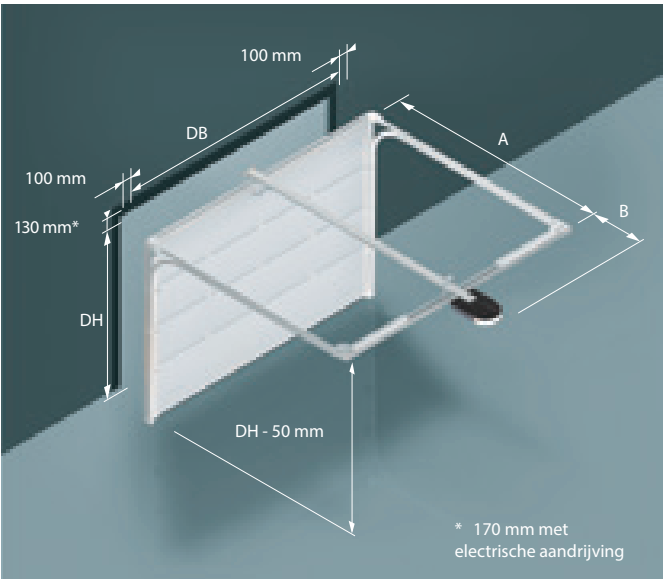
GD 210
Normal track application with torsion spring above door leaf



- Other dimensions**
- Minimum internal garage width:
 - Opening width + 200 mm (100 mm left and right)
 - Space requirement above opening height 210 mm
 - Passage height = opening height - 150 mm with manual operation
 - Clearance height = opening height with operator garage door

DH	A	B
≤ 2250 mm	2750 mm	570 mm
> 2250 - ≤ 2500 mm	3050 mm	570 mm
> 2500 mm	3450 mm	930 mm

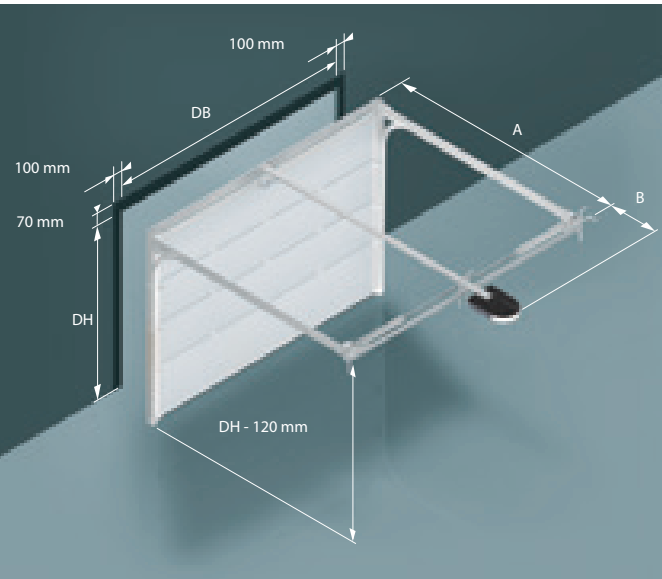
GD 130
Low fittings with torsion spring at the back of the horizontal guide tracks



- Other dimensions**
- Minimum interior garage width:
 - Opening width + 200 mm (100 mm left and right)
 - Space required above the opening height 130 mm + 40 mm for garage door with operator = 170 mm
 - Passage height = opening height - 150 mm with manual operation
 - Passage height = opening height for garage door with operator

DH	A	B
≤ 2250 mm	2900 mm	420 mm
> 2250 - ≤ 2500 mm	3200 mm	420 mm
> 2500 mm	3600 mm	780 mm

GD 70
Extra-low fittings with torsion spring on the horizontal guide tracks, only in combination with automatic operation



- Other dimensions**
- Minimum internal garage width:
 - Opening width + 200 mm (100 mm left and right)
 - Space required above opening height 70 mm
 - Passage height = opening height - 120 mm

DH	A	B
≤ 2250 mm	2900 mm	420 mm
> 2250 - ≤ 2500 mm	3200 mm	420 mm
> 2500 mm	3600 mm	780 mm

RUBBER SEALING



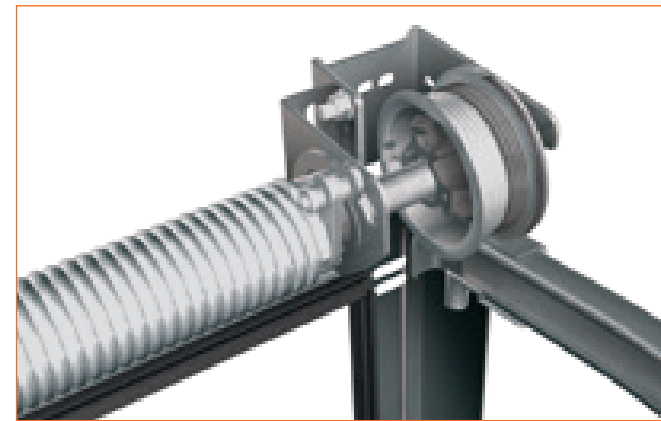
The design

and material selection for the top, bottom, and side seals ensure a moisture- and draught-proof barrier between the passage opening and the door. UV-resistant sealing rubbers, specifically developed for this sectional garage door, are integrated into the guide track system. Thanks to the materials used and the large dimensions of the components, the sectional garage door is resistant to high wind loads. All our products are tested by TÜV NORD, and we can provide certificates and test reports to confirm the specified values upon request.

In today's society, energy efficiency, safety, and environmental considerations are becoming increasingly important. From an energy standpoint, there are higher demands placed on seals. Specially developed seals for sectional garage doors provide maximum protection against external weather conditions such as moisture and drafts. These seals offer excellent insulating properties.



SAFETY & CERTIFICATION



The standard for the future - fully compliant with EN13241-1 standard. During the development of a sectional garage door, your safety comes first. That is why the sectional garage door is equipped with numerous innovative solutions that together guarantee your safety.

Spring break protection

To ensure effortless opening and closing, the sectional garage door is equipped with an "intelligent" torsion spring system. In the event of a spring breakage, the door's movement is automatically blocked, preventing any risk of an uncontrolled closing movement, ensuring safety at all times.

Obstacle detection during the closing of the sectional garage door:

If the sectional garage door encounters an obstacle while closing, the electric motor immediately signals the obstruction, halting the closing movement. The door then reverses and opens again, minimizing potential damage to both the door and the obstacle. All sectional garage doors are TÜV NORD approved and undergo rigorous durability testing, including 30,000 opening/closing cycles, after which they are thoroughly assessed by experts. Each door system is fully compliant with the EN13241 standard.

Certification

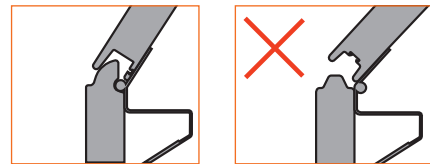
Garage doors must be built according to the EN13241 standard. The standard specifies the legal technical requirements for the sectional garage door. The sectional garage door is assessed on, among other things, resistance to wind load, water tightness, draught tightness sound insulation, thermal insulation and safety in use. All these criteria are given a classification based on tests carried out by TÜV NORD. This makes equivalent products from different manufacturers comparable. On each sectional garage door A plate is fitted to each sectional garage door which states the classification applicable to the sectional garage door. Sectional garage doors that have each feature are rated 0 give food for thought.

Standard burglar-proof garage doors

SKG certified at no extra cost

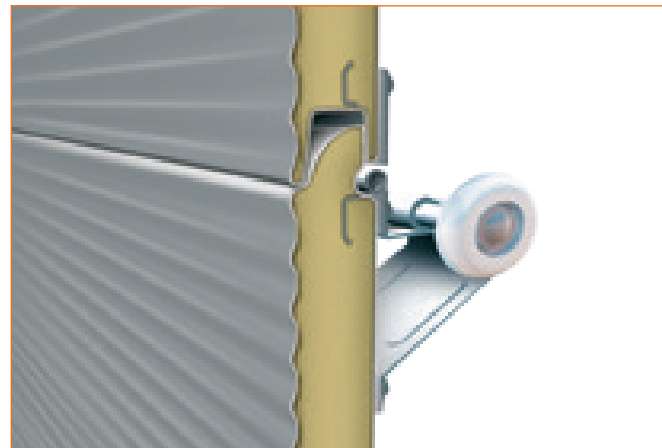
Alpha Deuren offers optimum security as standard at no extra cost. All electrically operated garage doors with a motor supplied by us comply with the SKG Politiekeurmerk Veilig Wonen quality mark. Garage doors that comply with the quality mark (i.e. not doors that are only electrically prepared) are always supplied with the necessary stickers.





Finger pinch protection between the panels

The sectional garage door is designed to minimize the risk of finger pinching during opening and closing, both on the inside and outside. This is achieved through an innovative profile shape at the top and bottom of each door panel. The panels move with minimal play between them, ensuring smooth and safe operation.



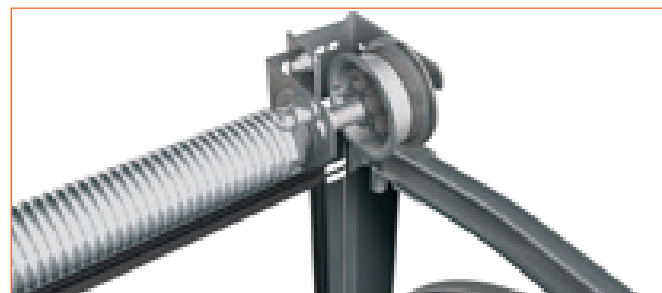
Precise and quiet door guidance

The movement of the sectional garage door leaf is made possible by an extremely carefully designed guide track system. The design is chosen so that 'derailing' of the rollers is excluded. The plastic rollers with bearings ensure quiet door guidance. The track system is closed on three sides and offers additional protection against injuries.



Lifting cable integrated in vertical guide tracks

The lifting cables are part of the weight compensation system and are carefully concealed in the vertical guide tracks. This construction provides additional protection against injury.



Balanced operating comfort with minimum effort

Due to the weight compensation system used, the resting position of the door leaf is independent of the opening passage. The sectional garage door can be opened to any desired passage height.

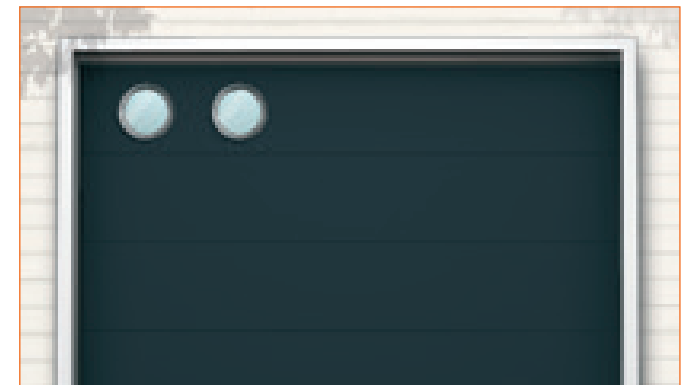


Quality, functionality and insulation

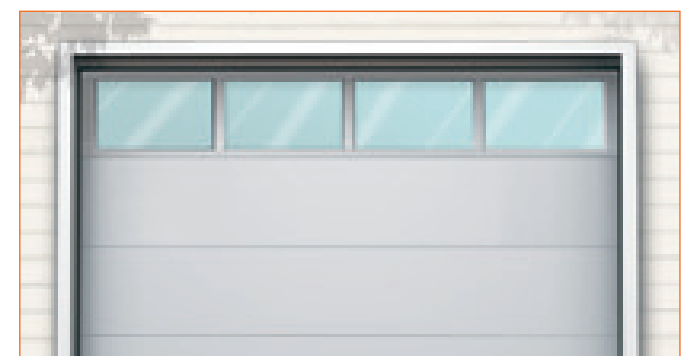
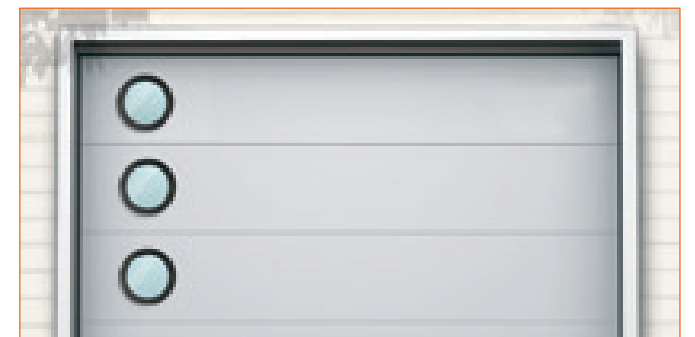
For the sake of light and transparency or simply for artistic reasons, sectional garage doors can be fitted with plastic windows. The windows are double-walled and therefore have good insulating properties. Basically, two window types are available. The construction of both types of windows is based on experience gained in industrial sectional door construction, in terms of choice of materials and insulating properties.

Design

The decorative round shape allows artistic patterns to be applied to the door leaf. The elegant stainless steel window mouldings give the door leaf extra appeal.



Specifications	Plastic window frames	Stainless steel window frames
Window material	Black tempered PVC	RVS
Window construction	Double-sided	Single
Cross section	ø 325 mm	ø 330 mm
Glass thickness	2 – 25 – 3 mm	6 mm
Insulation value	k = 2,8 W/m²K	k = 5,6 W/m²K
Transparency	100 %	100 %





DRIVE UNITS

W-600



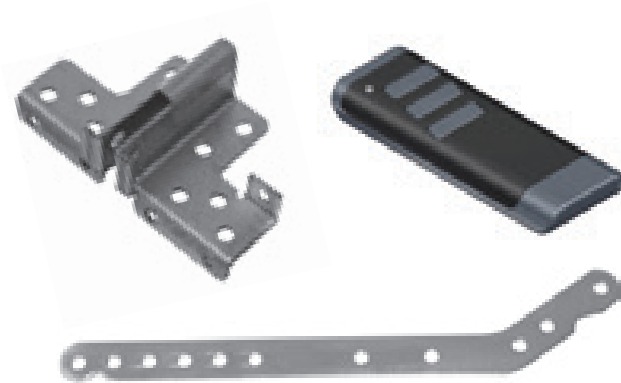
High-Quality Technology & Modern Design Accessories

The TORMATIC W-600 drives stand out for their sleek, modern design and advanced technology. Featuring contemporary LED lighting, exceptional stability, and maximum performance, these drives are engineered for reliability. Equipped with the trusted TORMATIC 3-button programming and an integrated force control device, they ensure precise operation. Additionally, the adjustable Soft Start and Soft Stop functions provide smooth and optimal door operation, enhancing both longevity and user experience.

At a glance

- Certified
- Operator sets for up-and-over and sectional doors
- Suitable for doors up to 10 m²
- Can be combined with all TORMATIC guide track versions
- Automatic close mode is adjustable

Technical Data	W-600
Pull and push force	600 N
Connection voltage	230 V / 50 Hz
Operating voltage	24 V / DC
Power consumption, operation	160 W
Power consumption, idle	< 0,5 W
Running speed	15 cm/s
Power-on time	30 % ED
Operating temperature	- 20° C / + 60° C
Control	Microprocessor-controlled Soft start / Soft stop Automatic close mode
Control sequence	1e impuls = Drive runs 2e impuls = Drive stops 3e impuls = Drive turns
Radiographic remote control	433 MHz, KeeLoq-Switch code
Lighting	1,6 W LED
Light on drive movement	60 sec. factory setting



The set

- Operator (W-600)
- Door hardware for up-and-over and sectional doors
- Design hand transmitter

ACCESSORIES



Accessories

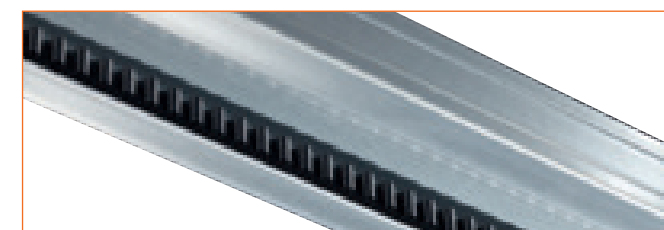
Comprehensive Range of Accessories for Every Need. From radio systems and safety components to additional impulse generators, our extensive accessory range has the right solution for every requirement. Each product can be enhanced with a variety of functions, offering flexibility and customization to meet your specific needs.

The 3-button programming

The renowned 3-button control from TORMATIC guides you clearly and quickly through all menu items. The fast operation saves you time and money when programming the drive. The menu guide is structured identically for all drives

LED lighting

Thanks to the new 1.6 W LED lighting elements, the power consumption of the drives has been reduced to a large extent. The long service life of the LED lighting elements saves you from having to change bulbs.



The guide track

The newly designed and optimized guide tracks use less steel while maintaining the high-quality standards of TORMATIC. The updated profile shape enhances the structural stability, and the guide tracks are available in both chain and toothed belt versions for flexibility in application.

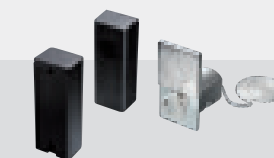
The extensive accessory package

The extensive accessory package This solution not only meets high design standards but also prioritizes comfort and safety. Experience the reliable, proven TORMATIC quality you can count on every day.



Handheld transmitters

MAX 43-4 (4 channels), MAX 43-2 (2 channels), Design Handheld Transmitter (3 channels). The hand transmitter and sensor operate using a KeeLoq exchange code, at a frequency of 433 MHz..



Safety

Photocell LS 5: integrated, 2 wires, reach 8 m, IP 45, 20-28 V AC/DC
Emergency release: with security and half cylinder



impulse generators

Digicode premium: radio code switch with metal keypad
Duocontrol: wireless push button, 4 min. light, combinable with UHF-KeeLoq hand transmitters



DRIVE UNITS

W-800 | WB-800



At a glance

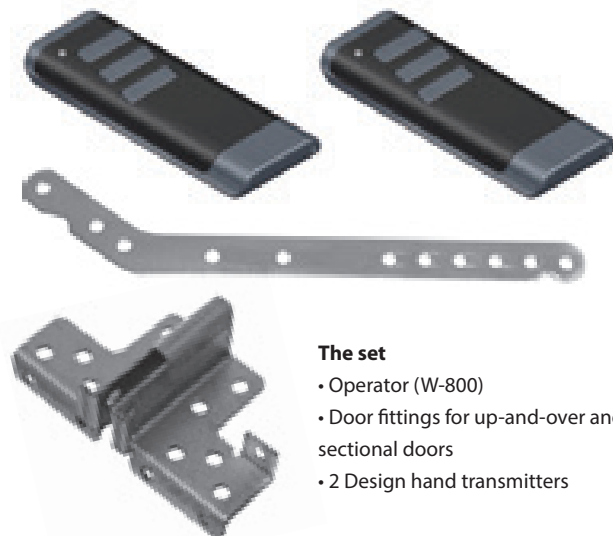
- Certified
- Operator for up-and-over and sectional doors
- Suitable for doors up to 14 m²
- Can be combined with all TORMATIC guide track versions
- Integrated LED lighting (1.6 W)
- Adjustable automatic close mode

Technical Data	W-800 / WB-800
Pull and push force	800 N
Connection voltage	230 V / 50 Hz
Operating voltage	24 V/DC
Power consumption, operation	240 W
Power consumption, idle	< 0,5 W
Running speed	17 cm/s to max. 24 cm/s
Power-on time	30 % ED
Operating temperature	- 20° C / + 60° C
Control	Microprocessor-controlled Soft start / Soft stop Automatic close mode
Control sequence	1° impuls = Drive runs 2° impuls = Drive stops 3° impuls = Drive turns
Radiographic remote control	433 MHz, KeeLoq-switch code
Lighting	1,6 W LED
Light on drive movement	60 sec. factory setting
Other functions	Door Select, Aeration function

Very fast and energy-saving

These garage door operators combine cutting-edge technology with exceptional energy efficiency. Typically, an operator is used for only a few minutes each day, spending the majority of its time in standby mode, consuming unnecessary power. The NRG operators reduce standby consumption to under 0.5 W, saving 94% more energy compared to typical DIY store models.

This not only helps protect the environment but also reduces your energy costs. In addition to their impressive energy efficiency, NRG operators deliver excellent performance. With the user-friendly 3-button programming, settings can be easily adjusted, while integrated functions ensure fast operation and smooth door movement.



The set

- Operator (W-800)
- Door fittings for up-and-over and sectional doors
- 2 Design hand transmitters

ACCESSORIES



LED Light Strip for Garage Doors

Stylish lighting

The LED Light Strip adds an atmospheric accent to your garage door. These energy-efficient LEDs provide bright illumination while consuming minimal power.

- Anodised aluminium
- Connection to 230V
- Easy-to-cut ALU tube profile for 4, 6 or 8 LEDs
- Control by hand transmitter possible
- Lighting optional with or without door movement



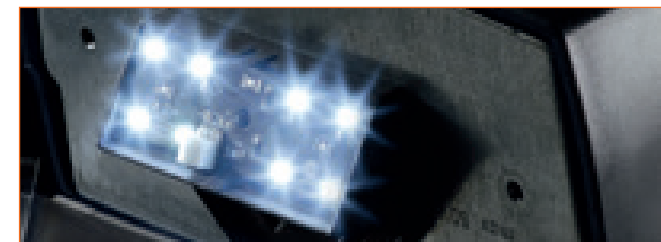
Effortless Operation and Enhanced Safety

The wide range of accessories offers the perfect solutions for every need. Whether it's radio systems, safety components, or additional pulse generators, all products come equipped with a variety of advanced functions.



Safety You Can Count On

The integrated force control device of the drives ensures a high level of safety. If the door encounters an obstacle, the drive stops instantly, and the door reopens. For added protection, a photocell can be installed to immediately detect any obstacles.



The LED lighting

Thanks to the high-quality 1.6 W LED lighting elements, the power consumption of NRG drives has been reduced to a large extent. The LED lighting elements are distinguished by a long service life and strong light intensity. Moreover, an awkward changeover from traditional incandescent lamps is eliminated.



Emergency release

In the event of a power failure, the emergency release provides quick and easy access to your garage while maintaining a high level of security. Using the provided keys, you can unlock the door drive and open it manually.

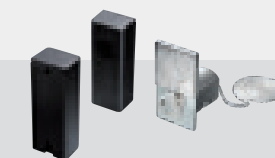
The extensive accessory package

Here, not only are high design requirements met, but we also deliberately focus on comfort and safety. Discover the proven tormatic quality you can rely on every day.



Handheld transmitters

MAX 43-4 (4 channels), MAX 43-2 (2 channels), Design Handheld Transmitter (3 channels). The hand transmitter and sensor operate using a KeeLoq exchange code, at a frequency of 433 MHz..



Safety

Photocell LS 5: integrated, 2 wires, reach 8 m, IP 45, 20-28 V AC/DC
Emergency release: with security and half cylinder



impulse generators

Digicode premium: radio code switch with metal keypad
Duocontrol: wireless push button, 4 min. light, combinable with UHF-KeeLoq hand transmitters



U-VALUES

Quality in every detail

At Alpha Deuren we don't just think in terms of doors; we think in terms of solutions. Your specific needs and requirements are at the heart of our design and production process. The result is doors that stand out for their quality and individuality, down to the smallest detail.

These doors meet the demands of the market and are used in a wide range of sectors and buildings—from industrial halls to garages, and from loading docks to factories. Alpha Deuren is everywhere you need us.

U-values of sectional doors	Maat	Vulling	Standaard	++ pakket
ISO40	5000x5000 mm		0,91	0,80
ISO60	5000x5000 mm		0,78	0,71
ISO80	5000x5000 mm		0,46	0,46
ALU40	5000x5000 mm	20 mm	3,70	3,62
Panorama 40	4000x4000 mm	20 mm	4,18	4.04
ALU40 Clima	5000x5000 mm	20 mm	3,18	3,12
ALU40 Clima	5000x5000 mm	23,6 mm	2,94	2,87
Panorama 40 Clima	4000x4000 mm	20 mm	3,16	3,04
Panorama 40 Clima	4000x4000 mm	23,6 mm	2,89	2,83
ALU60	5000x5000 mm		2,39	2,34
Panorama 60	4000x4000 mm		2,47	2,40

U-values calculation
General: With 40 mm industrial doors of 5000x5000 mm, U-value improvements of 10 to 25% are possible!*

*dependent on configuration

Disclaimer: The information in this brochure has been compiled with the utmost care. Nevertheless, it is possible that errors or omissions may occur. We expressly point out that no rights can be derived from the content or errors or omissions. © Alpha Deuren 2024.



ALSO AVAILABLE IN OUR RANGE: SPEED ROLLERS

Why choose a high-speed door?

- Cost and energy savings
- High speed doors open quickly and close automatically
- Opening time is minimal for better climate control
- Safe and easy to use
- Improvement of working climate and environment

Please contact us for more information.



WE BUILD YOUR DOOR



Alpha Deuren International BV

Pittelderstraat 10
6942 GJ Didam (NL)
+31 316 22 80 66
info@alpha-deuren.nl
marketing@alpha-deuren.nl
www.alpha-deuren.nl