

Sectional door

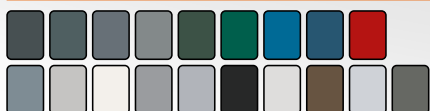
Insulated industrial exterior door

40 mm thick panels

Outside sections fitted with stylish Microline finish

Available with separate windows or window sections with aluminum window frames

Exterior available in 19 standard colours at no extra charge



Wind- and waterproof connection between the sections

Comprehensive range in filling options

Inside sections standard in RAL 9002



ISO 40mm XXL

Alpha's all-rounder from 8,000 mm width

Properties

- max. B x H = 10,000 x 6,000 mm, max. surface area (BxH) = 60 m²
- wind load resistance up to class 3 according to EN 12424, or up to 11 Beaufort (103 - 117 km/h)
- stable sections with microline profiling in 19 standard RAL colors at no extra cost
- electrically operated with T400, T450 or T500 rail system
- T450-roof angle track system available up to 15° angle
- EN 13241 compliant

ISO 40 mm XXL

The ISO 40 mm XXL sectional door is the largest Alpha door. The door combines excellent thermal and sound insulation properties with modern designed micro-profiled panels. The possibilities are limitless in design and content, so the door is always perfectly configured for any situation. Choose from a variety of window types, heights and widths and a variety of 19 standard Alpha in-house RAL colours.

Dimensions	
max. width (W)	10,000 mm
max. height (H)	6,000 mm
max. surface area	60 m ²
max. wind force*	Class 3
section thickness	40 mm
ALU-sections possible	8.000 - 9.000 mm: 2 panels 9.000 - 10.000 mm: 1 panel
ISO-windows possible	1 panel

Components and construction

The ISO 40 mm XXL sectional door consists of horizontal panels that roll on a rail system under the ceiling. Torsion springs balance the door's weight.

Materials

- thermally insulated, galvanized steel sandwich panels, insulated with polyurethane foam (CFC-free)
- panel thickness 40 mm
- end caps in galvanized steel
- rails made of Sendzimir galvanized steel
- additional reinforced horizontal rails
- door fittings in galvanized steel
- rollers with nylon wheels and 11 mm shaft
- steel cables with sixfold safety
- top, side and bottom seal of insulating material
- seal between the panels of insulating material

Surface treatment

- the exterior side of the panels has a microline profiling and a polyester-coating in RAL3000, RAL5003, RAL5010, RAL 6005, RAL6009, RAL7005, RAL7015, RAL7016, RAL7021, RAL7022, RAL7035, RAL8014, RAL9002, RAL9005, RAL9006, RAL9007, RAL9010, BS10A05 or BS18B25. Other RAL colors available¹
- the interior side of the panels has a horizontal profiling and a polyester-coating in RAL9002. Other RAL colors available¹

Window and panel options

- various oblong window sizes available, with straight or rounded corners, containing double insulating glazing
- extra low burglar resistant windows or attractive round windows
- one or two panels constructed of anodized aluminum profiles with double acrylic, polycarbonate or Plexiglas glazing, polycarbonate hollow-core plate or single-walled perforated aluminium plate in 2 variations*

Drive

The Iso 40 mm XXL has an electric motor with reduction gear. The control unit is available as standard with deadman's control, pulse control or remote control.

Technical details electric drive

- power..... 3-230V-PE / 3N-400V-PE / 3-400V-PE
- power frequency 50 / 60Hz
- degree of protection IP54

Protection

- emergency hand chain hoist at operating height
- spring break protection
- anti lift protection
- according to EN 13241

Control and operation

- control voltage:..... 24Vdc
- mains supply external devices:..... 24Vdc (350mA) / 230Vac (1,6A)
- status and information display (including 6 most-recent faults)
- maintenance-cycle counter
- force monitoring in OPEN direction: sudden changes to the counter-balancing are detected. Self-learning feature and consequently no activation of force monitoring function due to, e.g., a change in spring tension
- automatic detection of direct inverter (DI) or frequency inverter (FI). Setting of output speed, soft start, soft stop, braking ramps, etc. is possible

Other forms of operation that can be connected to the standard control box:

- operation by pull switch, key-operated switch, push-button, photocell, radar, induction loop detection or remote control



Available controls:

TS971, TS981

Structural provisions and connection (by others)

- separate technical data sheets detailing dimensional and structural requirements are available for all designs and track systems
- if an electric motor is specified, a CEE plug socket must be installed within 1 m of where the control unit will be positioned (3-230V-PE / 3N-400V-PE / 3-400V-PE by others)
- with standard CEE-plug, the control box is IP54 compliant

Options / accessories ¹⁾

Control and operation

- fast version (with frequency control)
- additional controls as described above available at surcharge
- control box directly wired (control box IP65)
- main switch directly wired on the control box (IP65)

Protection

- safety light curtain
- cable break protection
- connection of traffic lights (red/green or red and green)
- warning flash light (orange or red)
- heavy shoot bolt with spring return
- outside locking cylinder

Construction

- separate 'wicket door', next to the ISO door
- customer-specified RAL coating on inside and/or outside of the sections (with the exception of fluorescent and traffic colours)
- adjusted wind restriction
- 15,000 cycle springs

¹ subject to surcharge

* A total maximum door leaf weight of 1,000 kg applies to all fillings



For more information:

Pittelderstraat 10
6942 GJ Didam Netherlands
+31 316 228066
info@alpha-deuren.nl
www.alpha-deuren.nl

